

Locating QCD's critical end point

Christian S. Fischer

Justus Liebig Universität Gießen

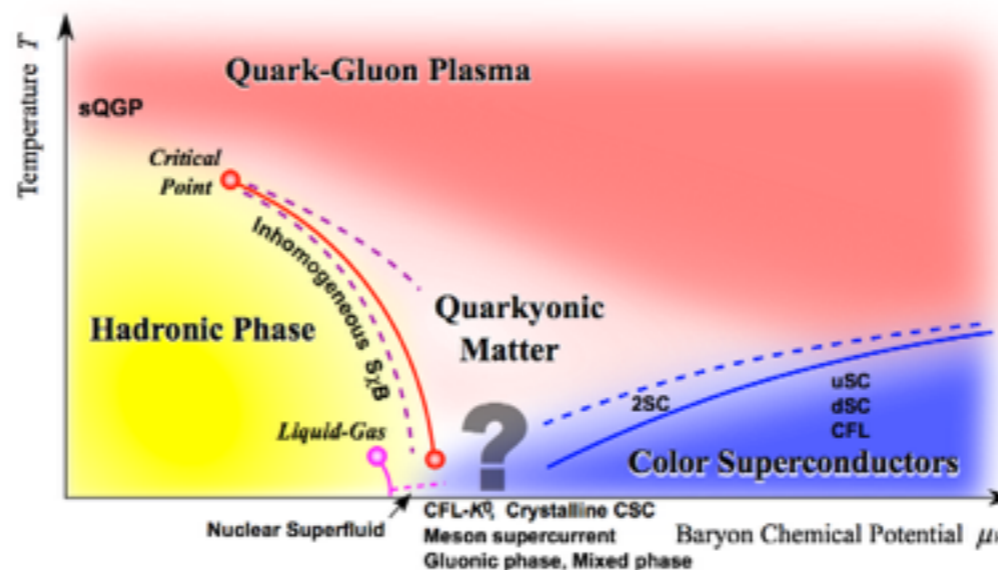


31st of Oct 2016

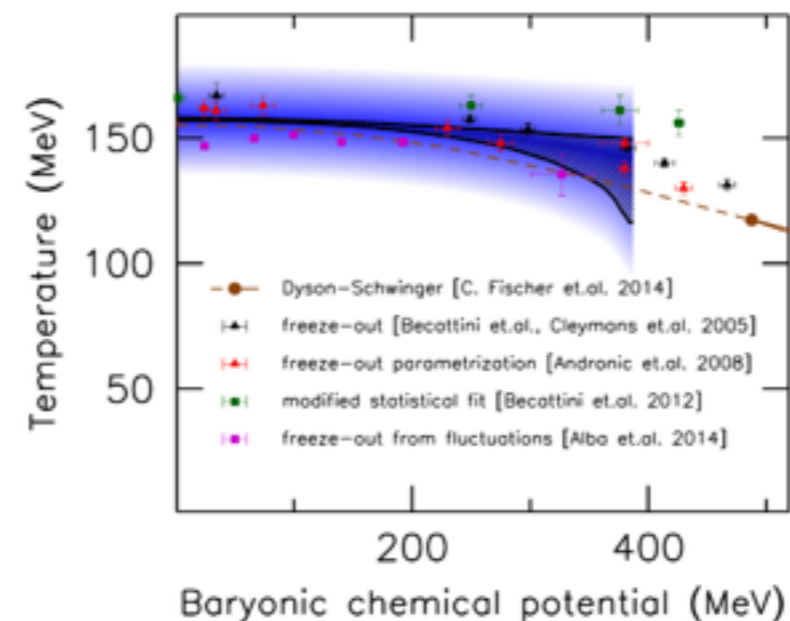


Eichmann, CF, Welzbacher, PRD93 (2016) [1509.02082]
Eichmann, Sanchis-Alepuz, Williams, Alkofer, CF, PPNP in press [1606.09602]

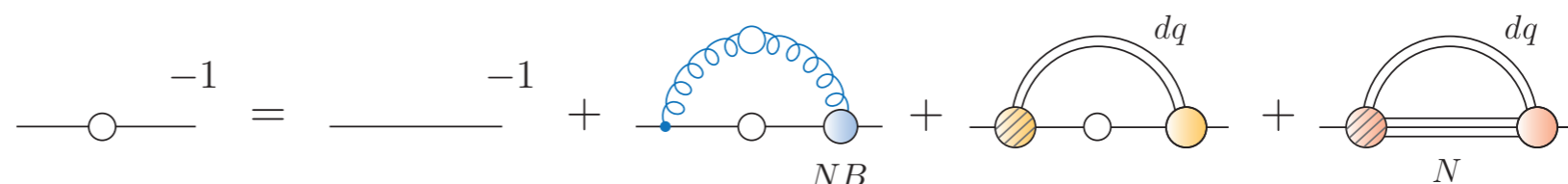
1. Introduction



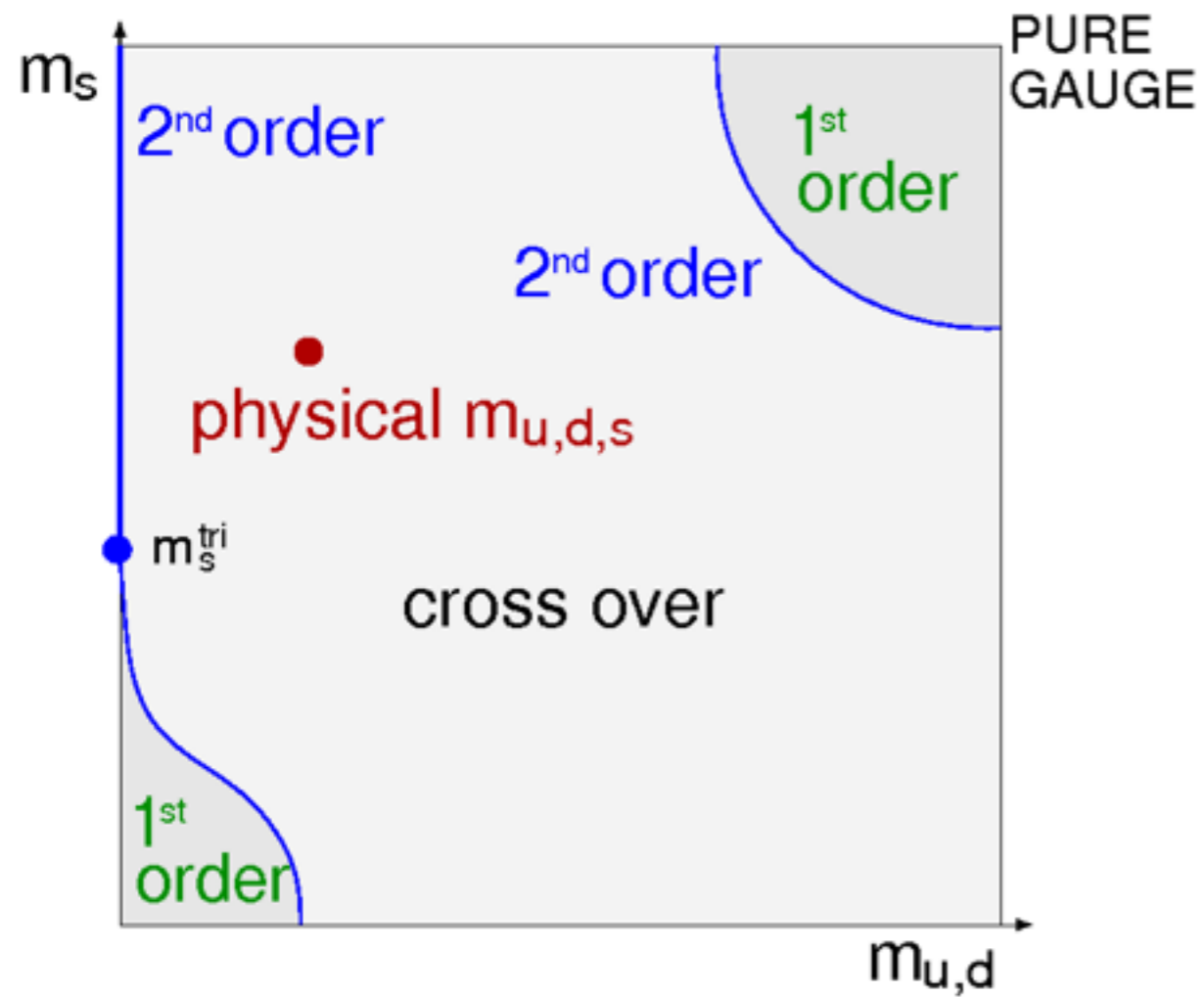
2. Gluons, quarks and the CEP



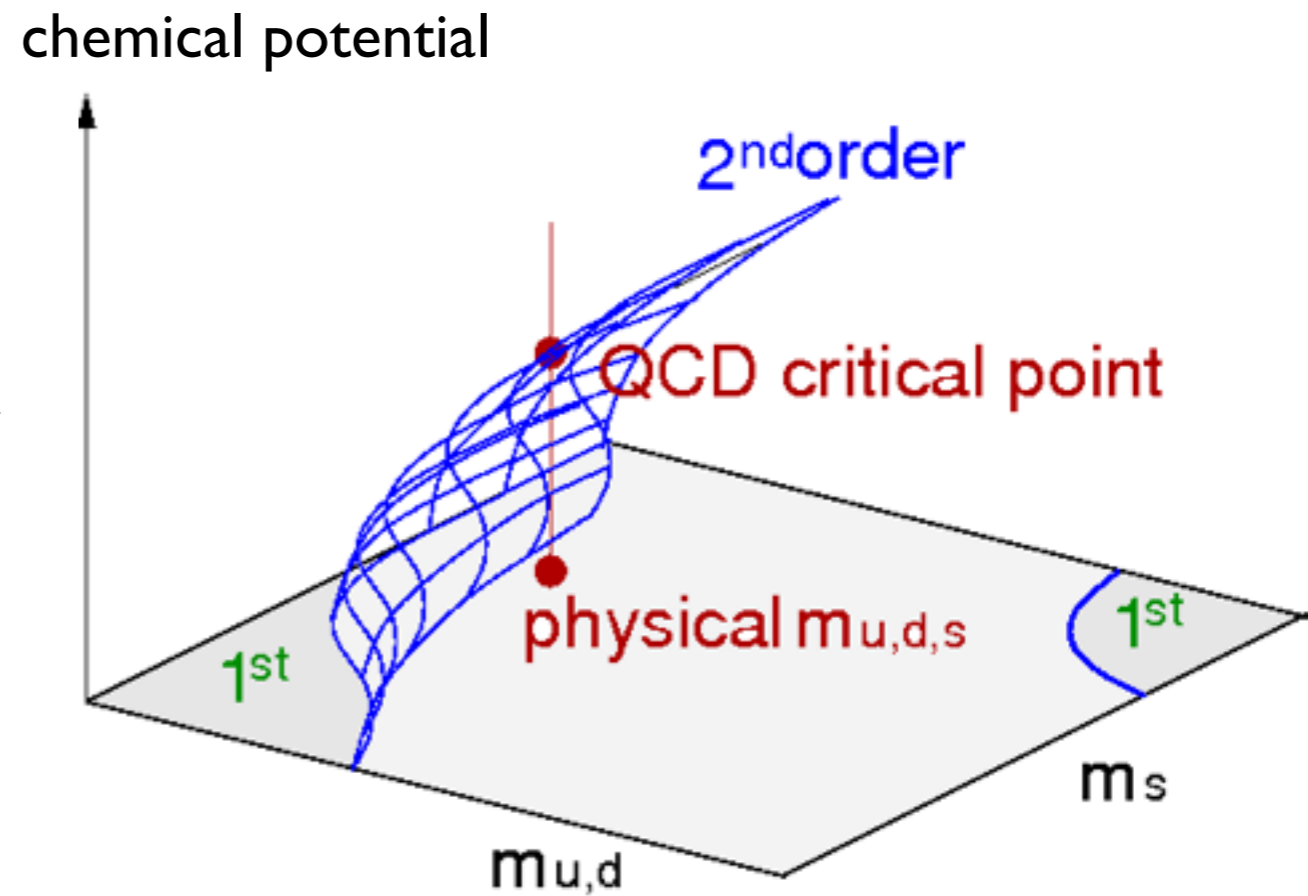
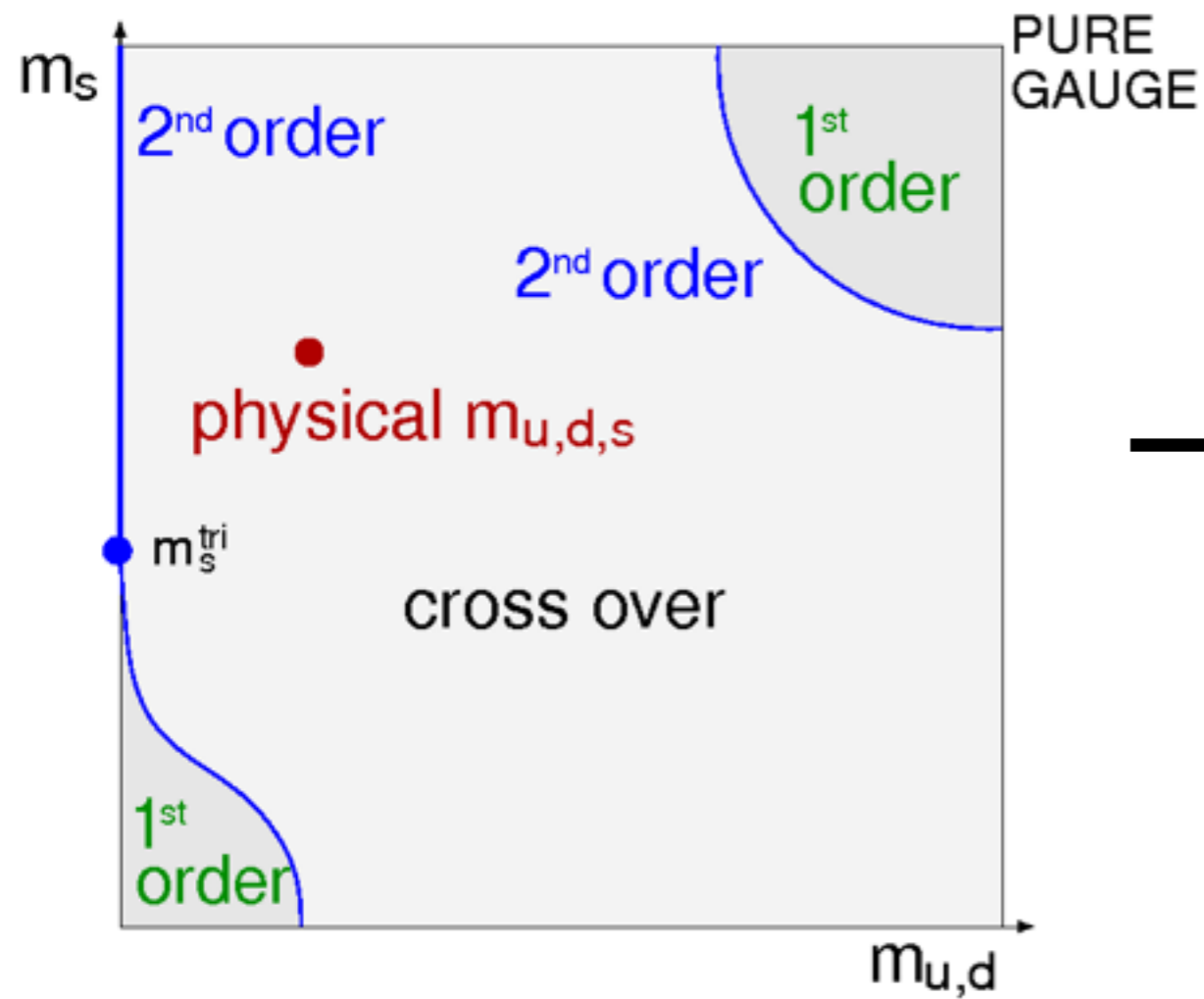
3. Baryon effects on the CEP



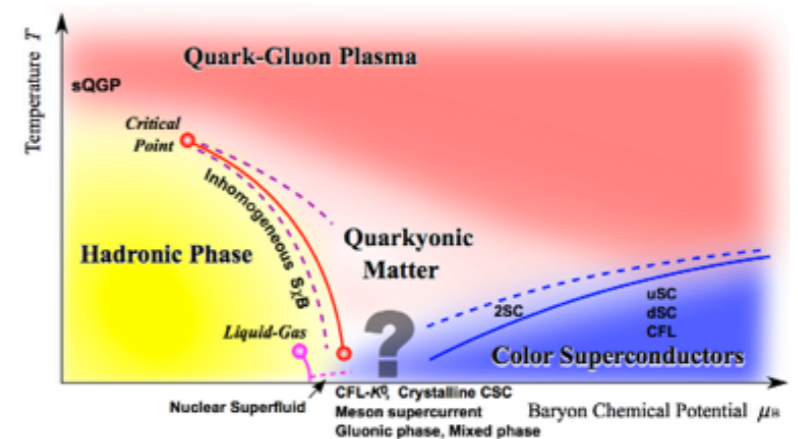
QCD phase transitions



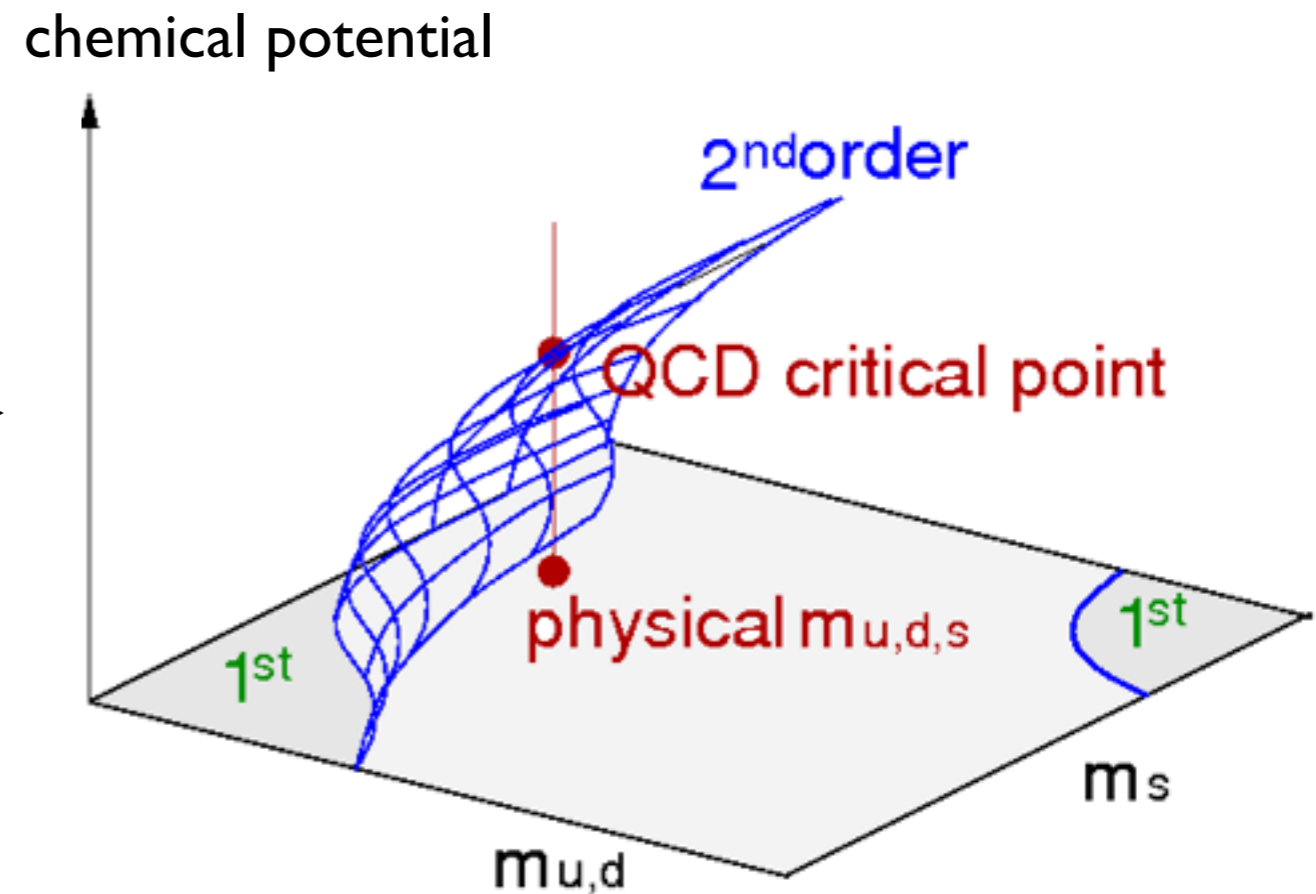
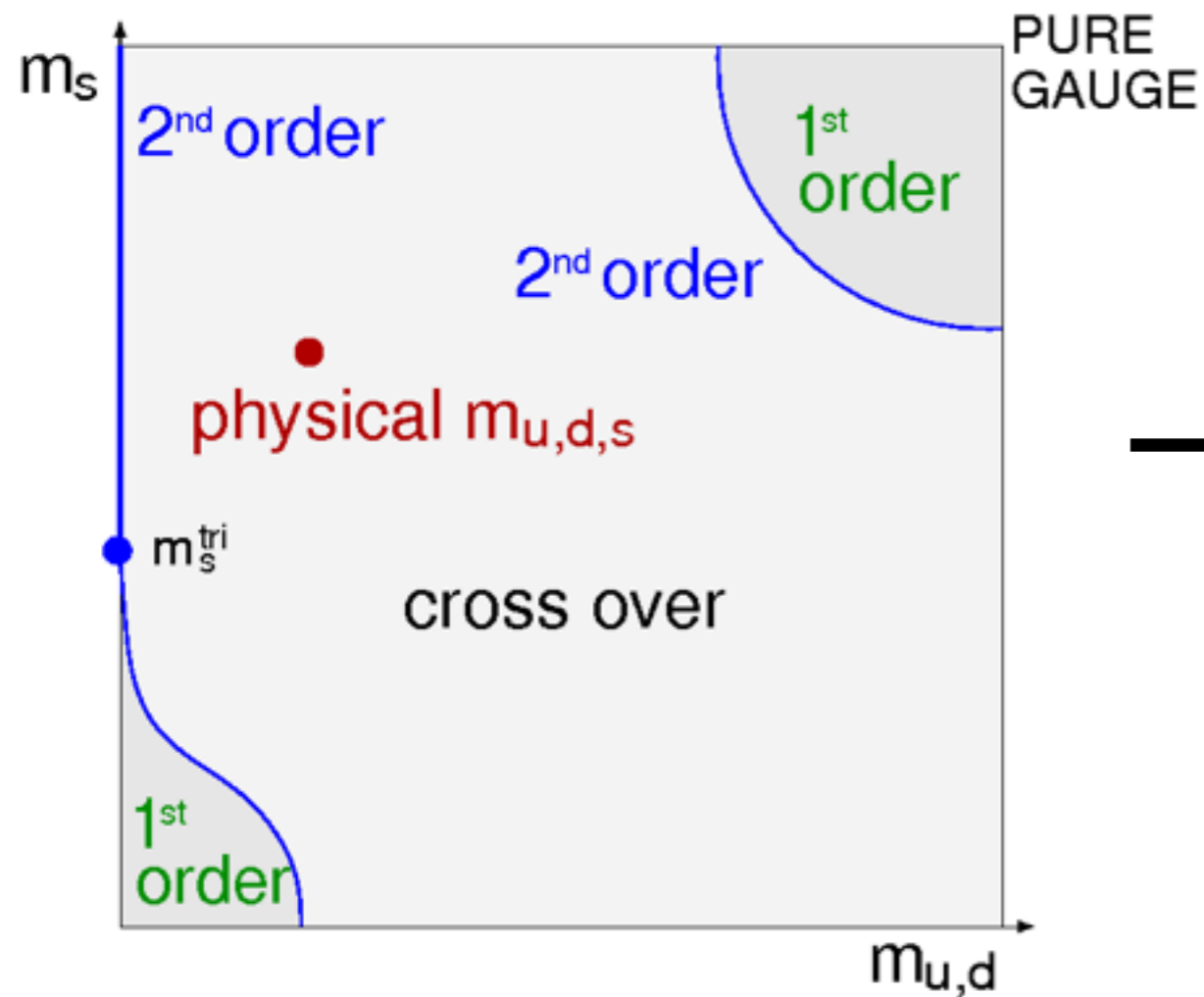
QCD phase transitions



Is this happening ??

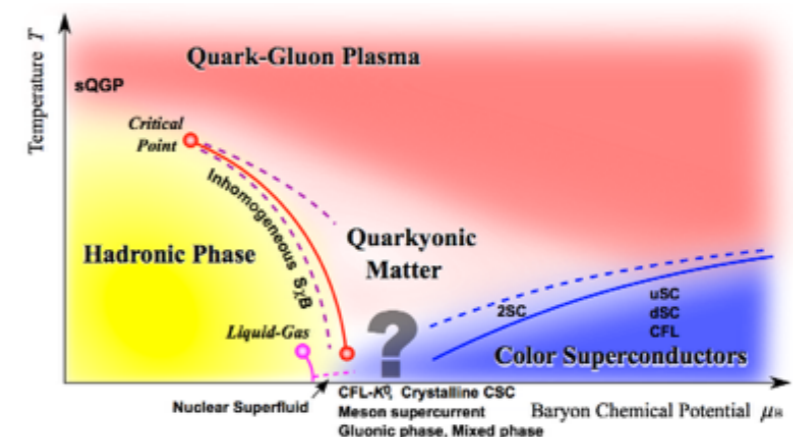


QCD phase transitions



- Lattice-QCD
 - present: extrapolation
 - future: exact methods ?
- DSE/FRG
 - not exact, but allow for '10%-physics'

Is this happening ??



Search for the CEP

- Taylor expansion ($N_f=2$):

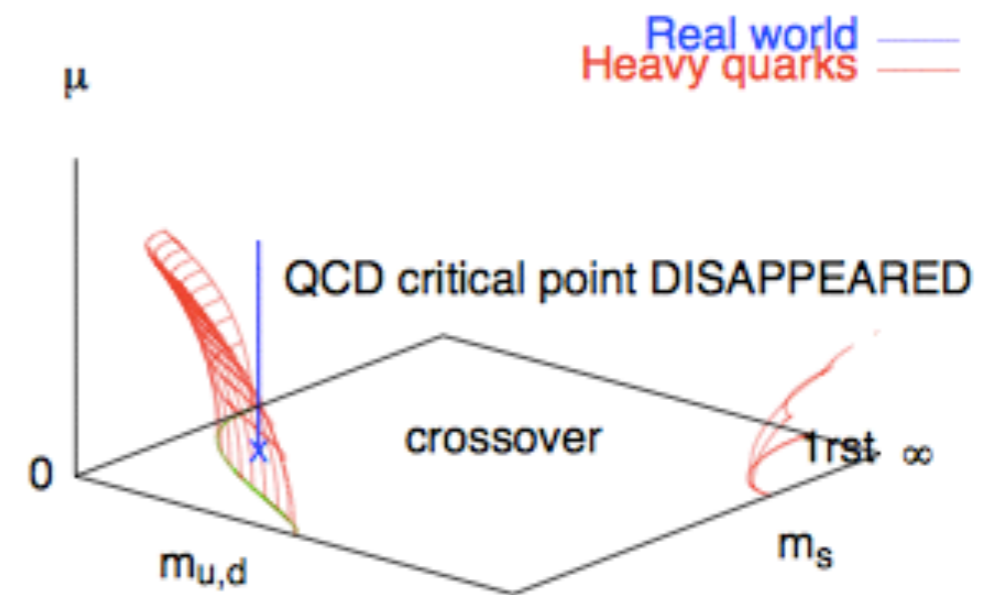
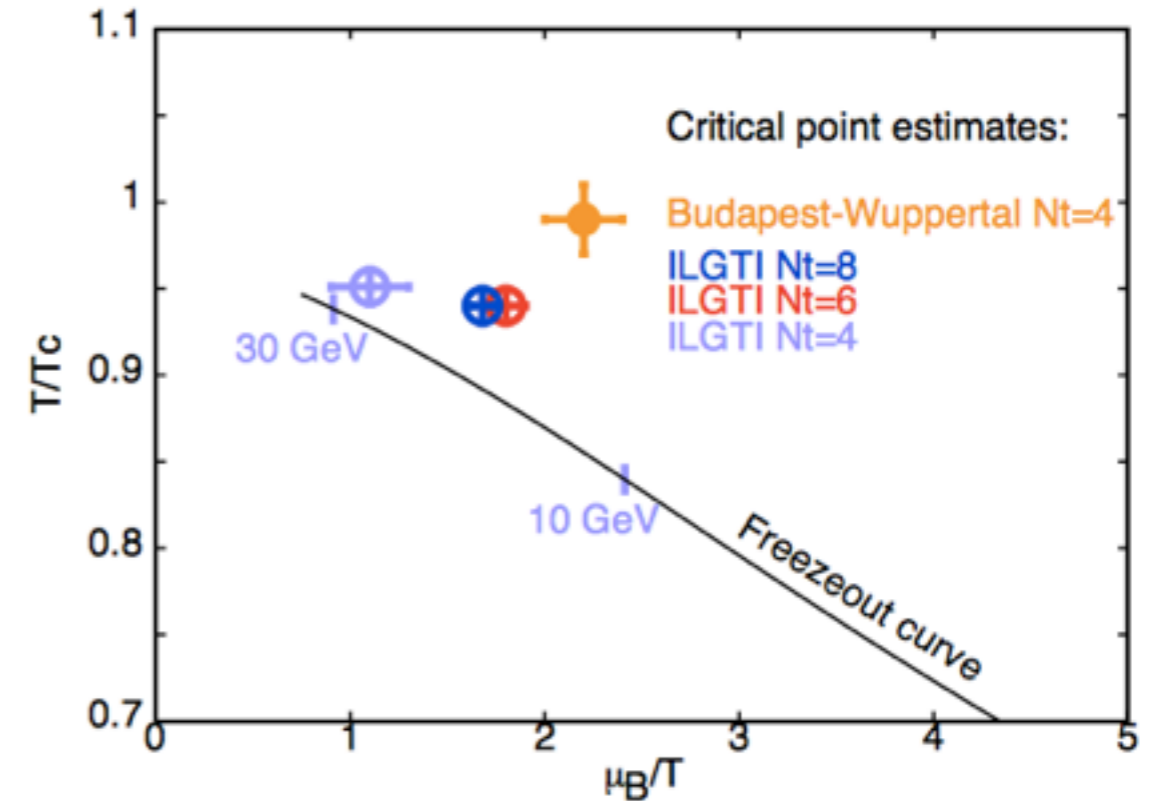
Datta, Gavai and Gupta, NPA 904-905 (2013) 883c
Gavai, Gupta, PRD 71 (2005) 114014

- Reweighting ($N_f=2+1$):

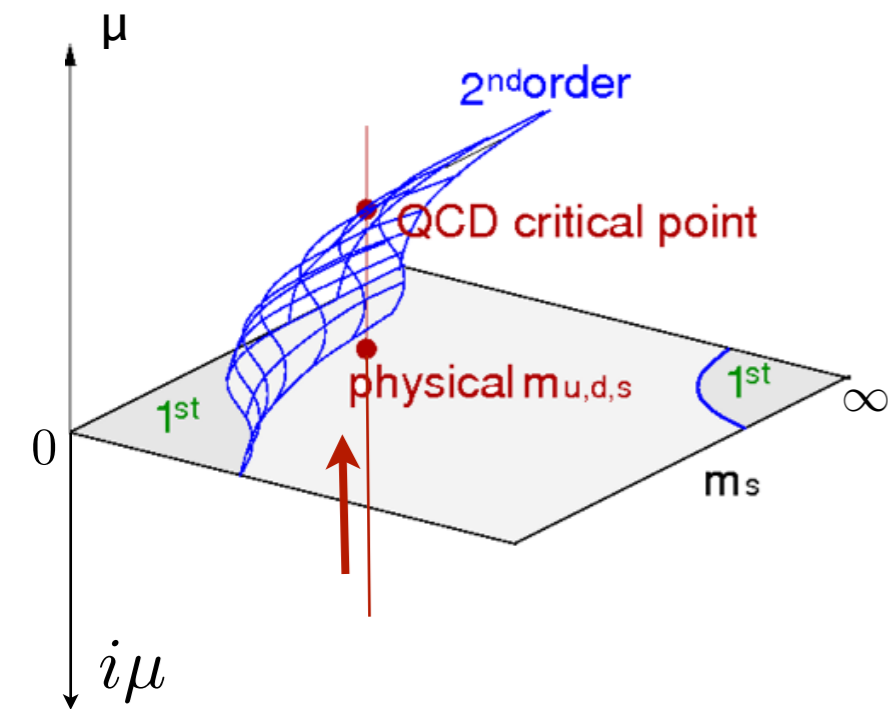
Fodor, Katz, JHEP 0404 (2004) 050

- Analytic continuation ($N_f=3$):

de Forcrand, Philipsen, JHEP 0811 (2008) 012;
NPB 642 (2002) 290



Chiral transition line from analytic continuation



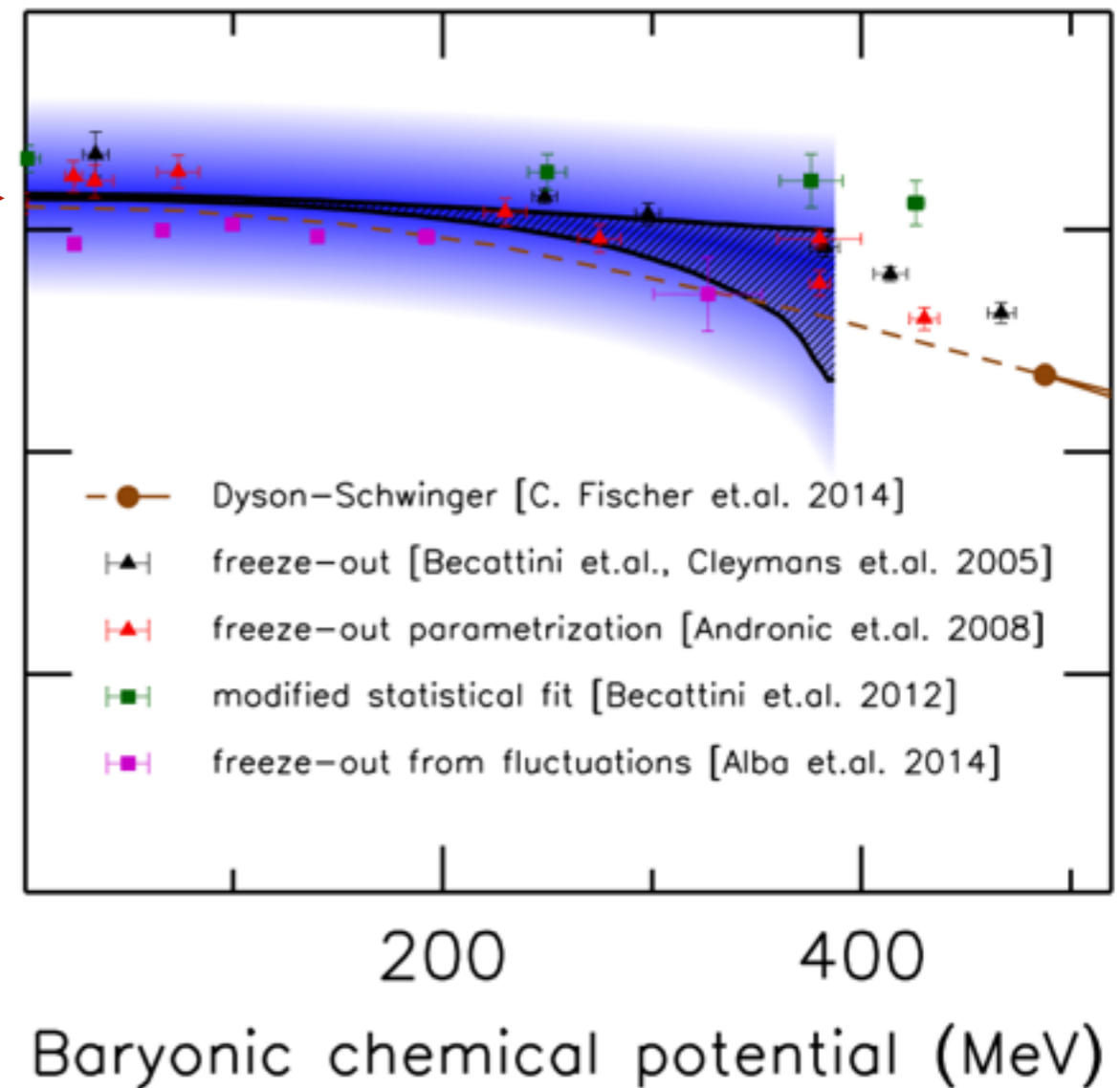
Lattice method:

- Calc. boundary at imaginary μ and extrapolate to real μ
- Control systematics

Results:

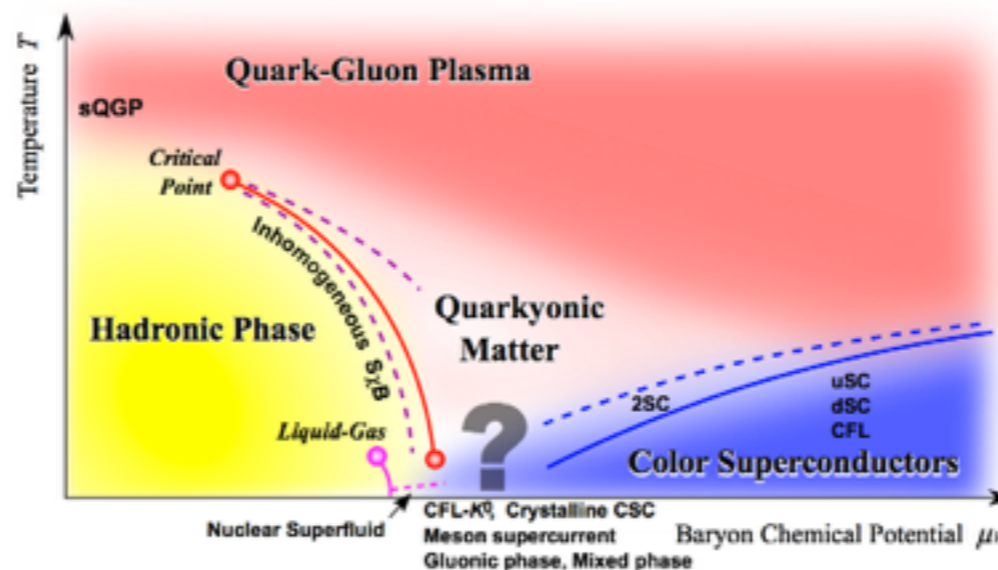
- Larger curvature than previous results (but: different definitions and error budget)

Temperature (MeV)

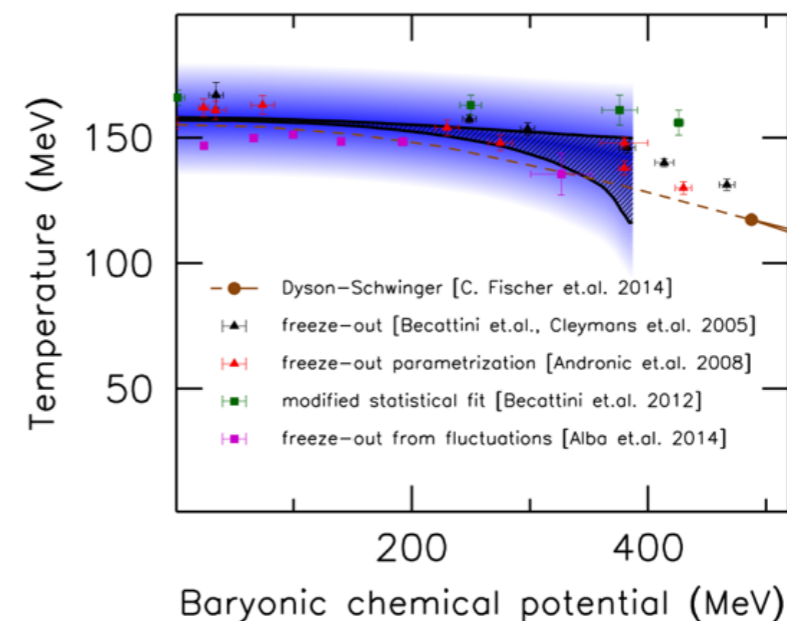


Bellwied, Borsanyi, Fodor, Günther, Katz, Ratti and Szabo, PLB B 751 (2015) 559

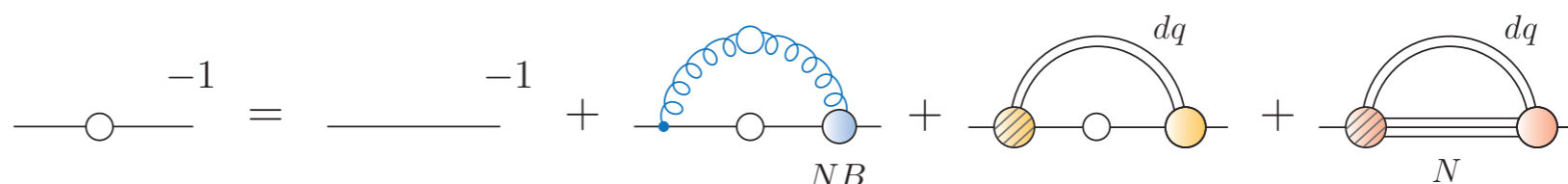
1. Introduction



2. Gluons, quarks and the CEP



3. Baryon effects on the CEP



QCD order parameters from propagators

$$\text{---} \overset{-1}{\bullet} \text{---} = \text{---} \overset{-1}{\text{---}} \text{---} - \text{---} \overset{\text{---}}{\text{---}} \text{---}$$

Chiral order parameter:

$$\langle \bar{\Psi} \Psi \rangle = Z_2 N_c \text{Tr}_D \frac{1}{T} \sum_{\omega} \int \frac{d^3 p}{(2\pi)^3} S(\vec{p}, \omega)$$

Deconfinement:

- dressed Polyakov loop

$$\Sigma = - \int_0^{2\pi} \frac{d\varphi}{2\pi} e^{-i\varphi} \langle \bar{\Psi} \Psi \rangle_{\varphi}$$

Synatschke, Wipf, Wozar, PRD 75, 114003 (2007)
 Bilgici, Bruckmann, Gattringer, Hagen, PRD 77 094007 (2008)
 CF, PRL 103 052003 (2009)

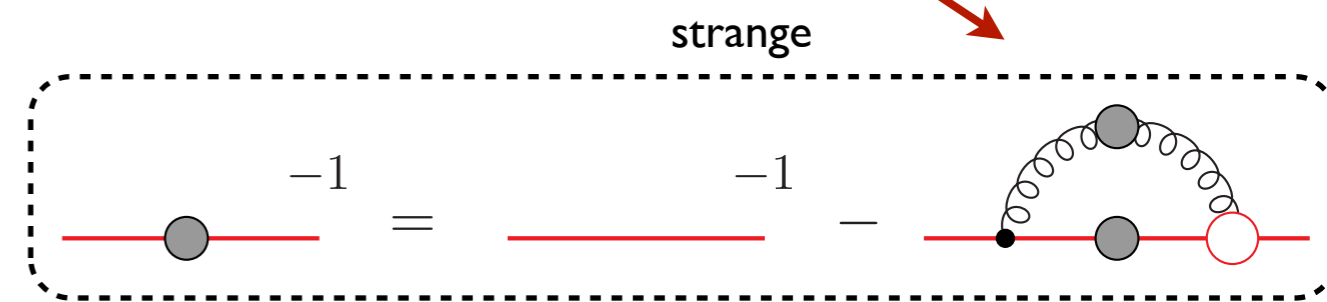
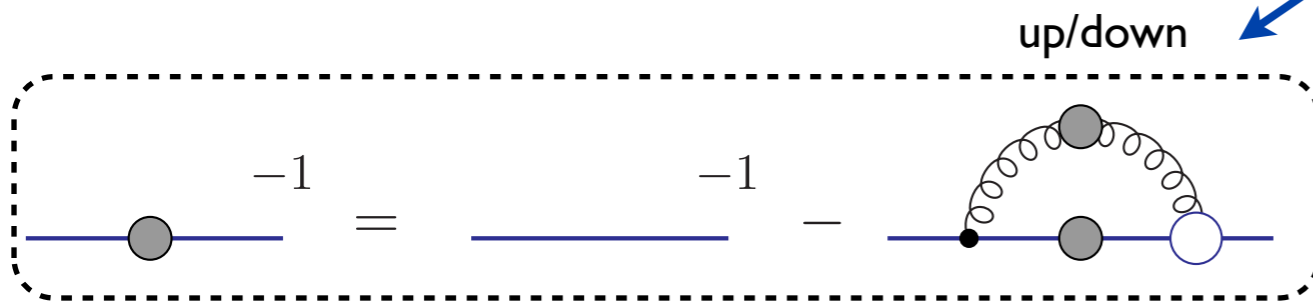
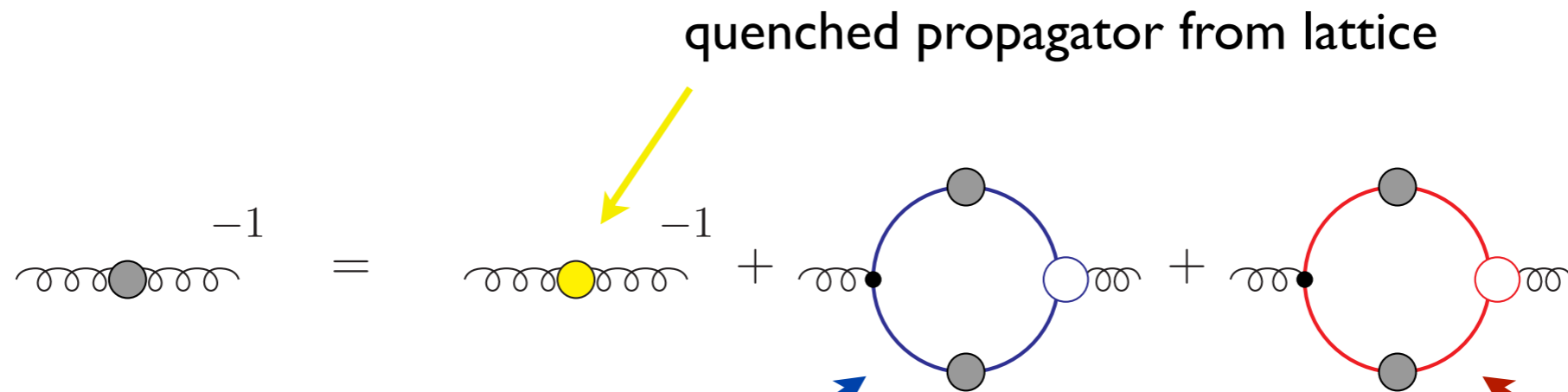
- Polyakov loop potential

$$L = \frac{1}{N_c} \text{Tr} e^{ig\beta A_0}$$

$$\frac{\delta(\Gamma - S)}{\delta A_0} = \frac{1}{2} \left(\text{---} \overset{\text{---}}{\text{---}} \text{---} - \text{---} \overset{\text{---}}{\text{---}} \text{---} - \text{---} \overset{\text{---}}{\text{---}} \text{---} - \frac{1}{6} \text{---} \overset{\text{---}}{\text{---}} \text{---} + \text{---} \overset{\text{---}}{\text{---}} \text{---} \right)$$

Braun, Gies, Pawłowski, PLB 684, 262 (2010)
 Braun, Haas, Marhauser, Pawłowski, PRL 106 (2011)
 Fister, Pawłowski, PRD 88 045010 (2013)
 CF, Fister, Luecker, Pawłowski, PLB 732 (2013)

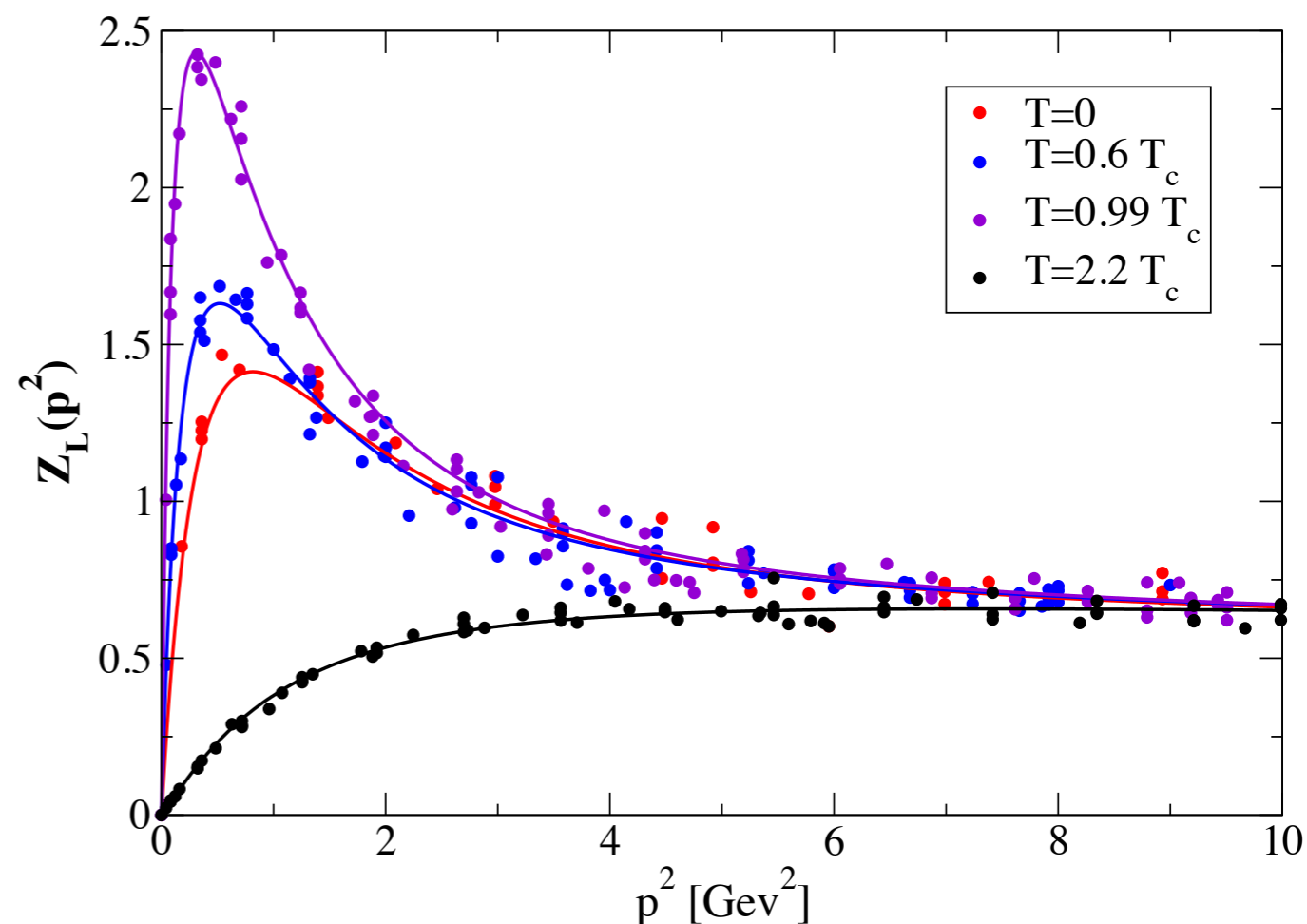
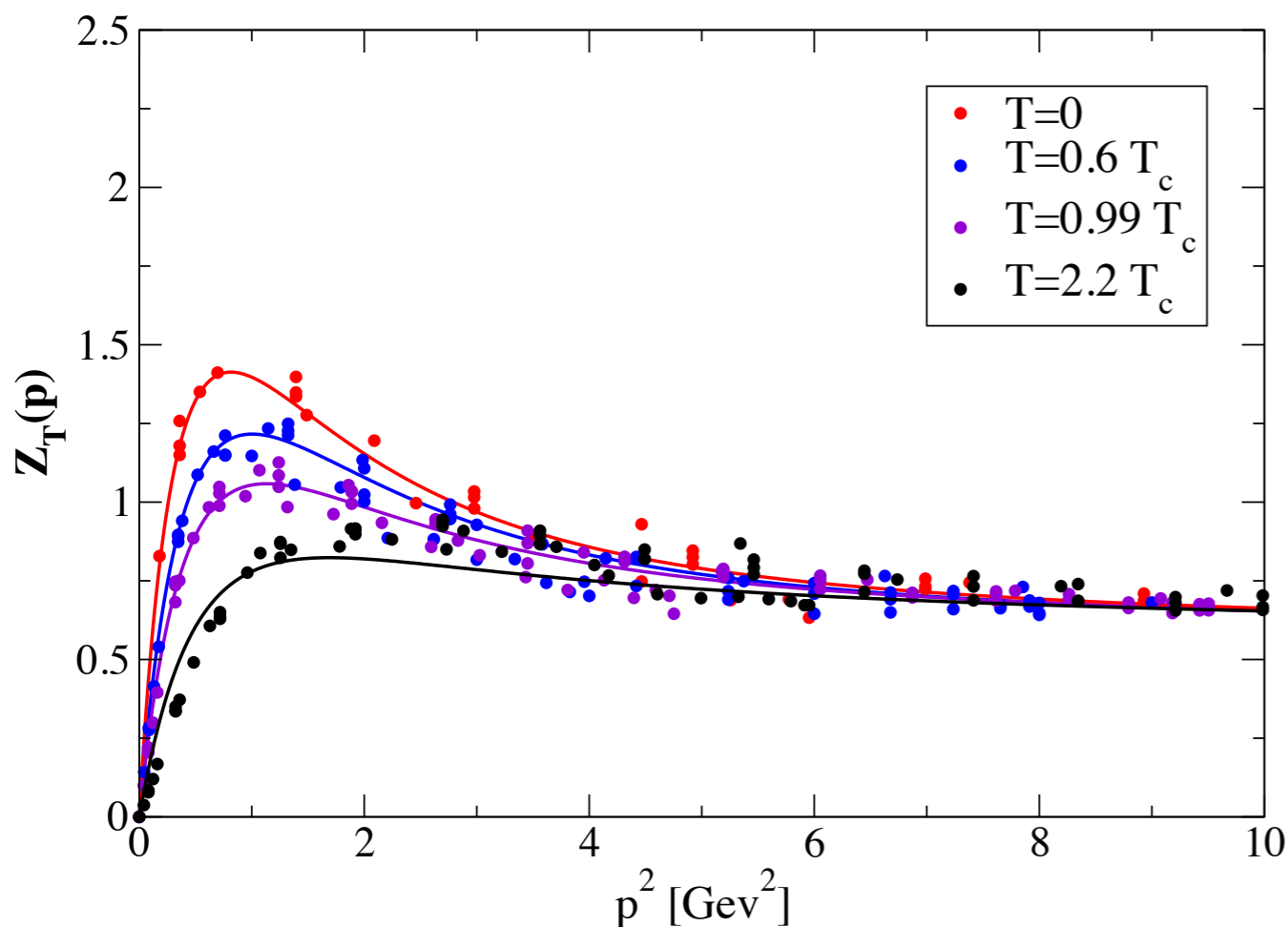
$N_f=2+1$ -QCD with DSEs



- quenched: without quark-loop
- $N_f=2$: isospin symmetry
- $N_f=2+1$: solve coupled system of $2+3+3$ equations
- Vertex: ansatz built along STI and known UV/IR behaviour

Glue at finite temperature ($T \neq 0$)

T-dependent gluon propagator from quenched lattice simulations:



- Crucial difference between magnetic and electric gluon
- Maximum of electric gluon near T_c

Cucchieri, Maas, Mendes, PRD 75 (2007)

CF, Maas, Mueller, EPJC 68 (2010)

Cucchieri, Mendes, PoS FACESQCD 007 (2010)

Aouane, Bornyakov, Ilgenfritz, Mitrjushkin, Muller-Preussker and Sternbeck, PRD 85 (2012) 034501

Silva, Oliveira, Bicudo, Cardoso, PRD 89 (2014) 074503

FRG: Fister, Pawlowski, arXiv:1112.5440

Approximation for Quark-Gluon interaction

- T, μ, m-dependent vertex:

Abelian WTI

$$\Gamma_\nu(q, k, p) = \tilde{Z}_3 \left(\delta_{4\nu} \gamma_4 \frac{C(k) + C(p)}{2} + \delta_{j\nu} \gamma_j \frac{A(k) + A(p)}{2} \right) \times$$

$$\times \left(\frac{d_1}{d_2 + q^2} + \frac{q^2}{\Lambda^2 + q^2} \left(\frac{\beta_0 \alpha(\mu) \ln[q^2 / \Lambda^2 + 1]}{4\pi} \right)^{2\delta} \right)$$

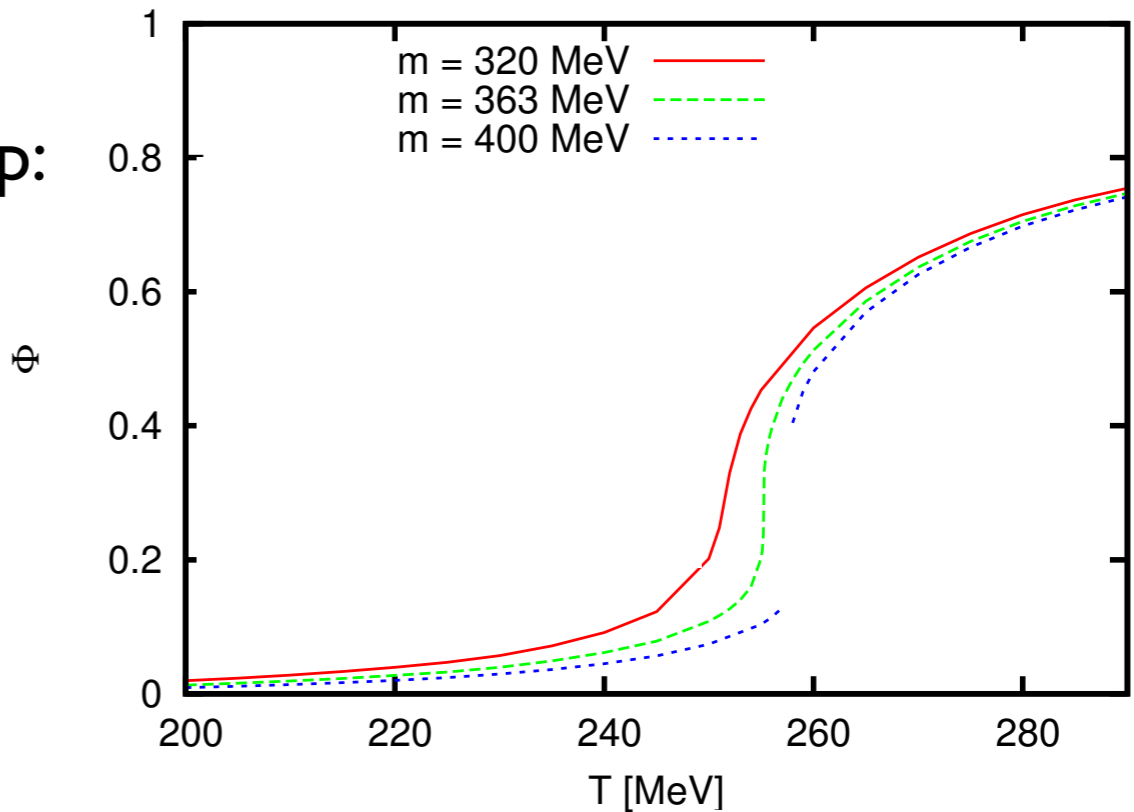
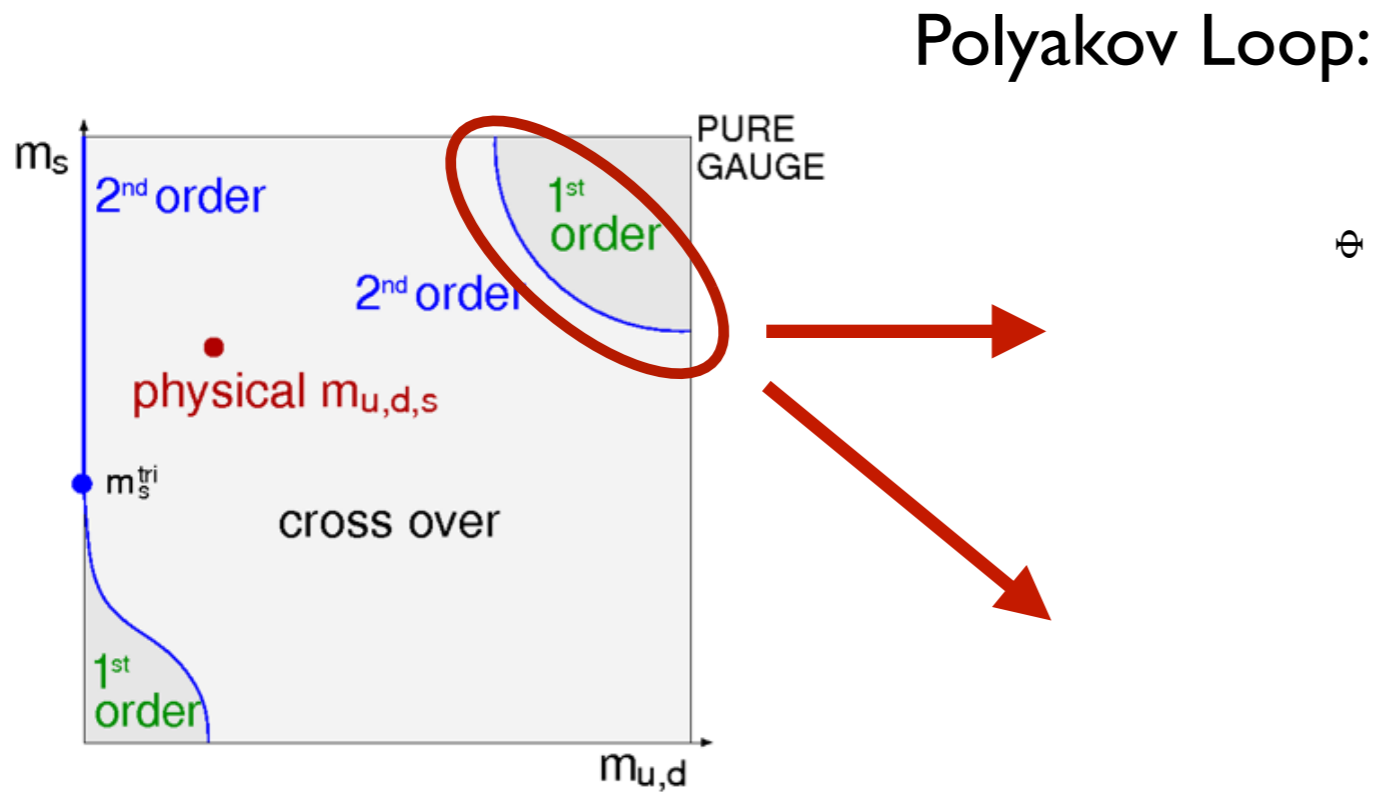
perturbation theory

Infrared ansatz:

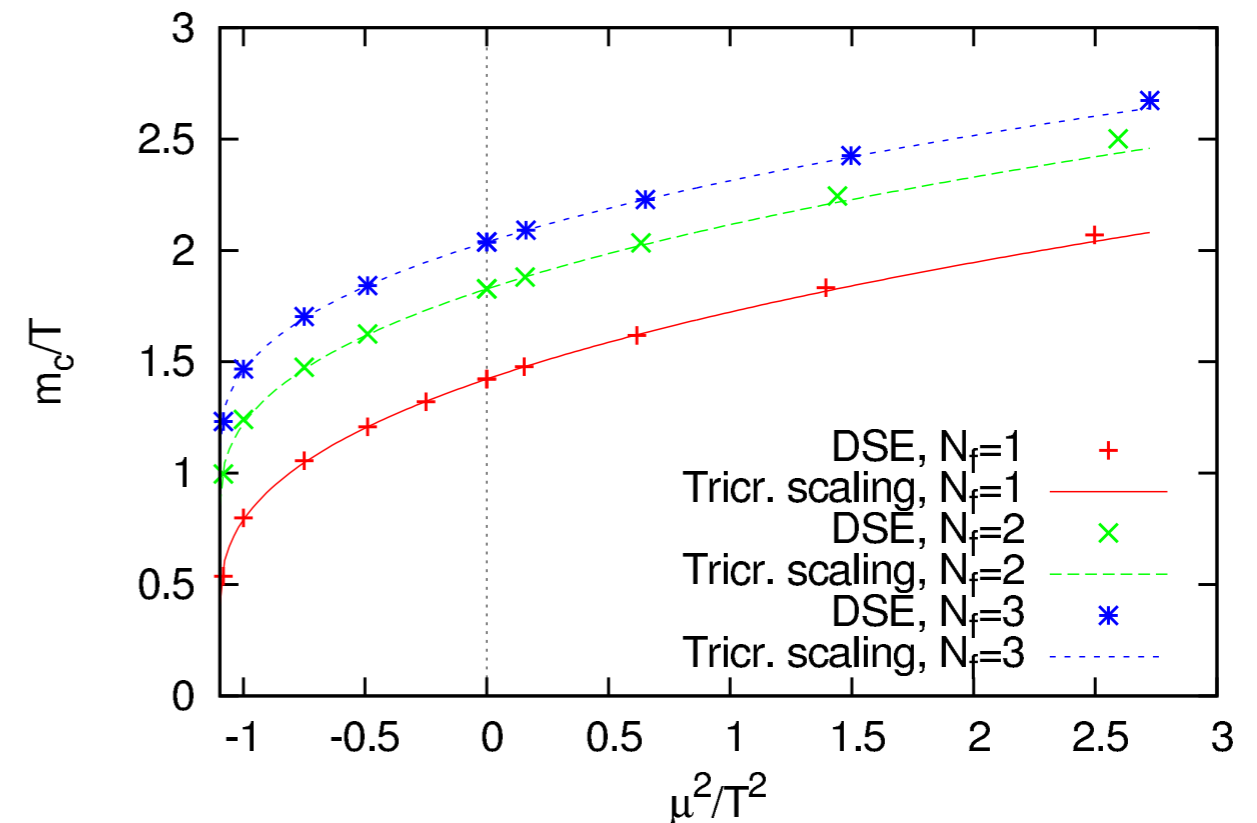
- d2 fixed to match gluon input
- d1 fixed via quark condensate (see later)
- correct UV (quant.) and IR-behavior (qual.)

explicit solutions at T=0: Mitter, Pawłowski and Strodthoff, PRD 91 (2015) 054035
Williams, CF, Heupel, PRD PRD 93 (2016) 034026

Critical line/surface for heavy quarks



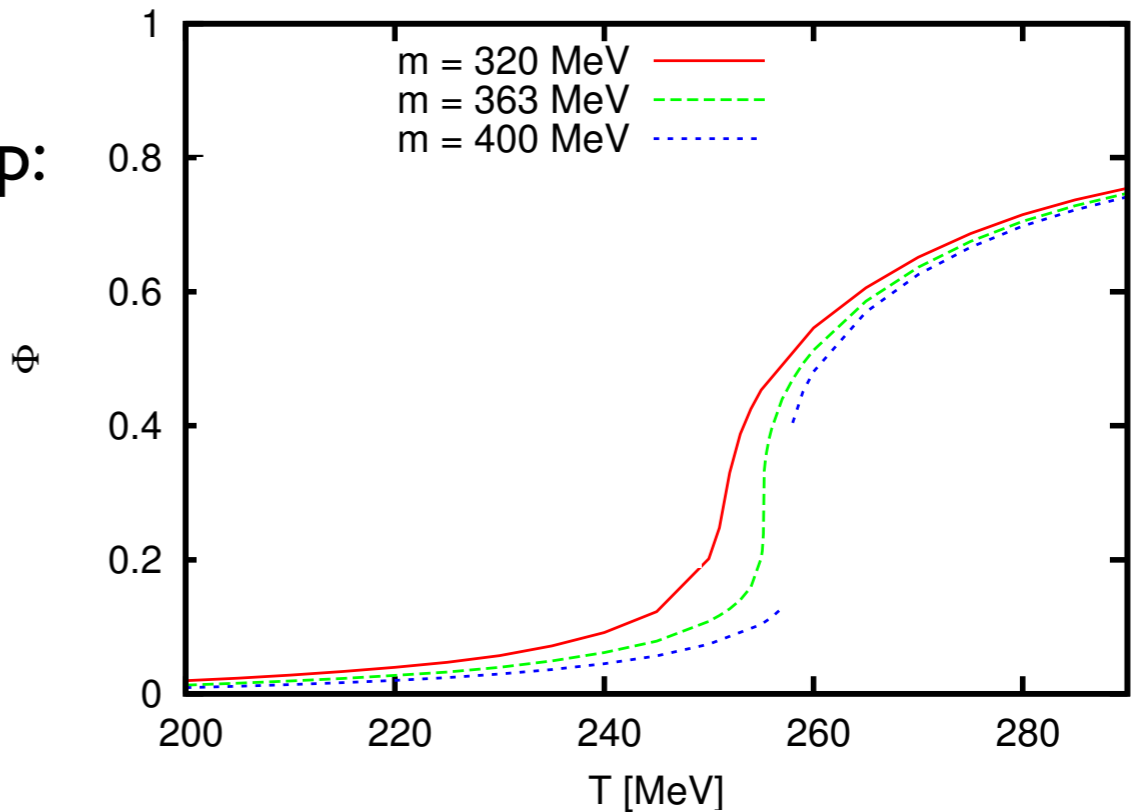
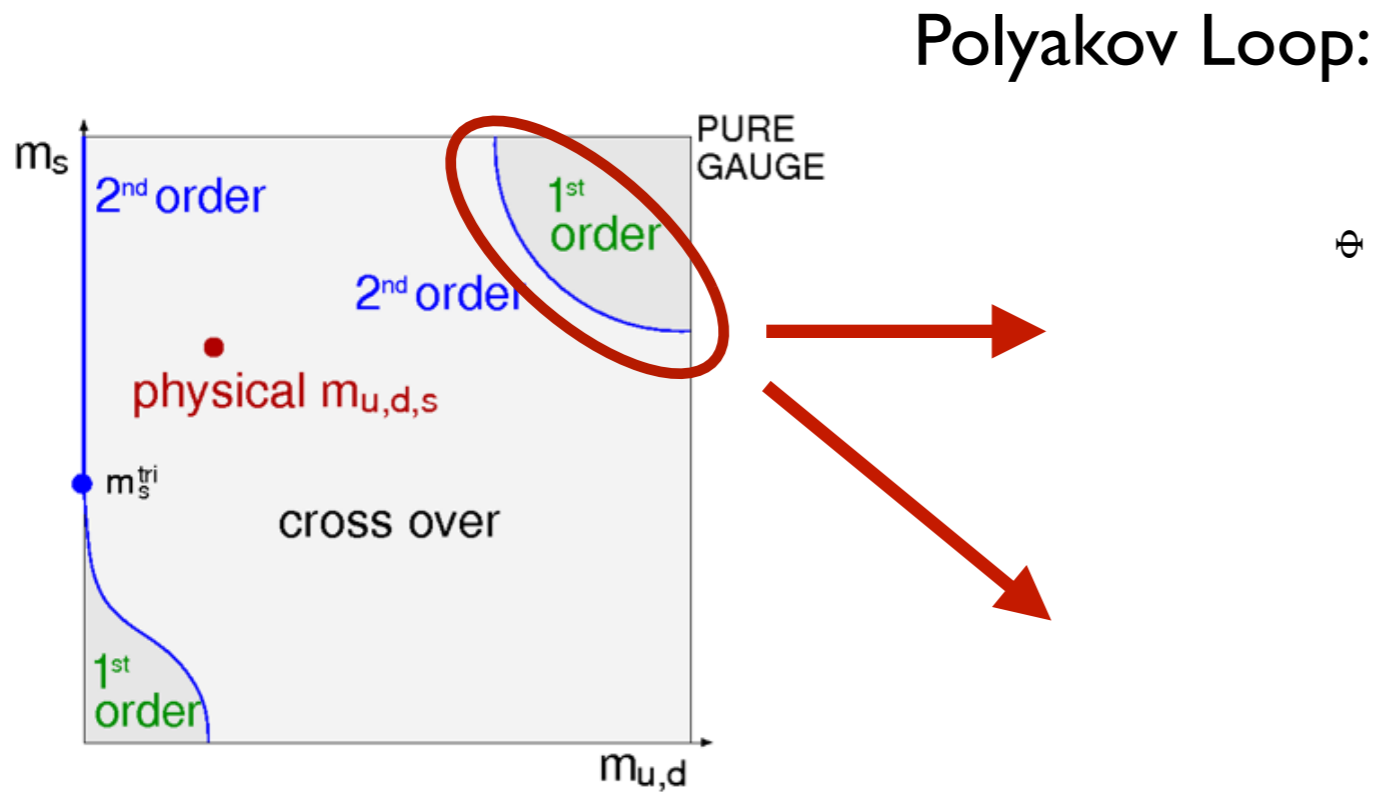
- Deconfinement transition in agreement with lattice QCD
- Correct tricritical scaling



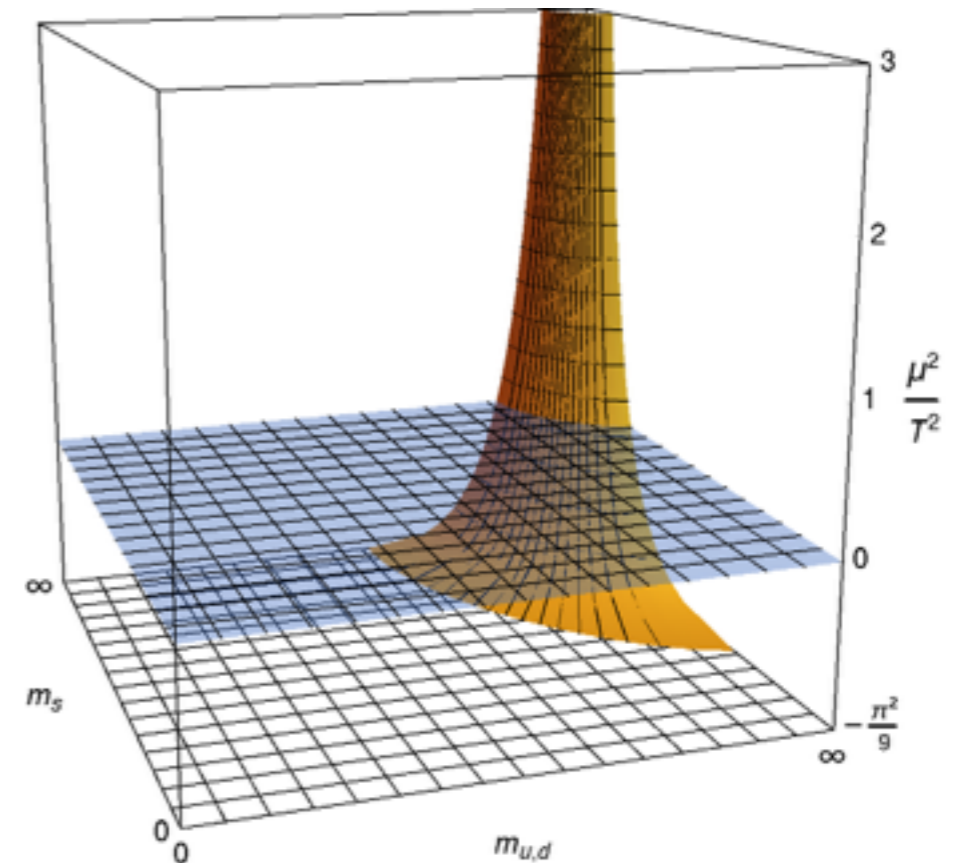
Fromm, Langelage, Lottini, Philipsen, JHEP 1201 (2012) 042

CF, Luecker, Pawłowski, PRD 91 (2015) 1

Critical line/surface for heavy quarks



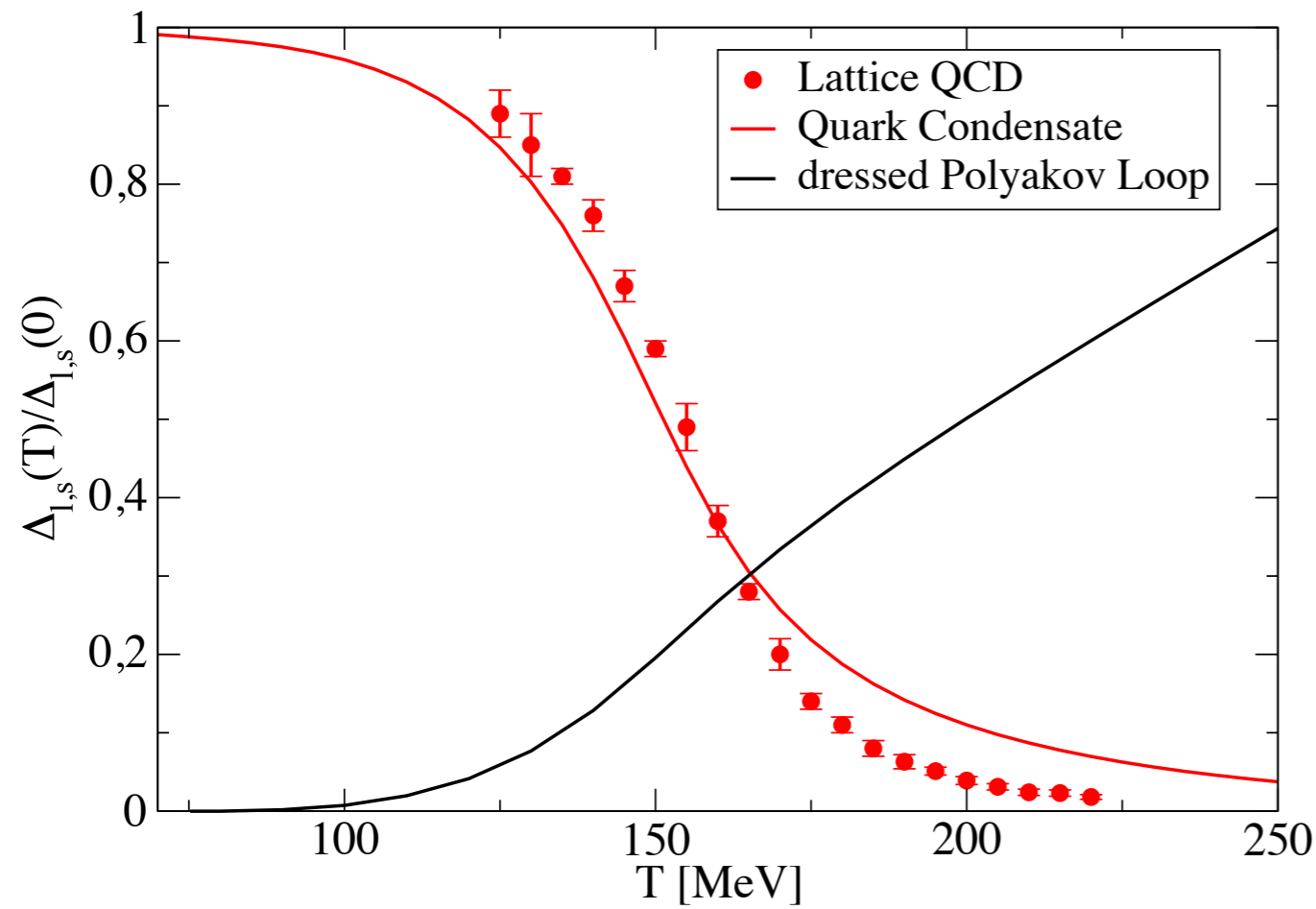
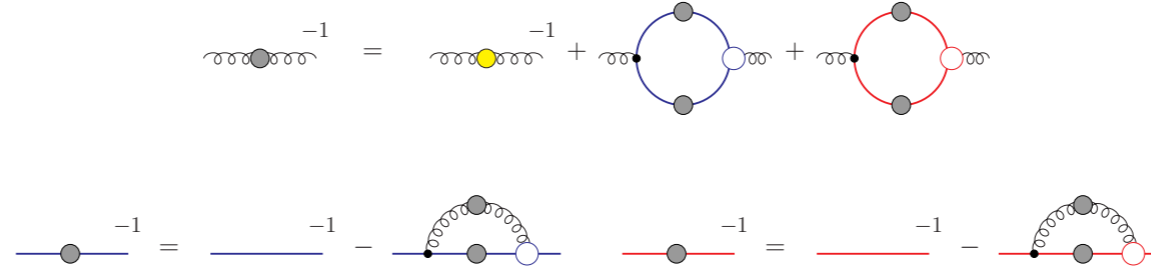
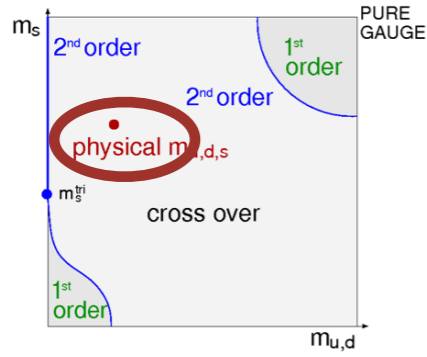
- Deconfinement transition in agreement with lattice QCD
- Correct tricritical scaling



Fromm, Langelage, Lottini, Philipsen, JHEP 1201 (2012) 042

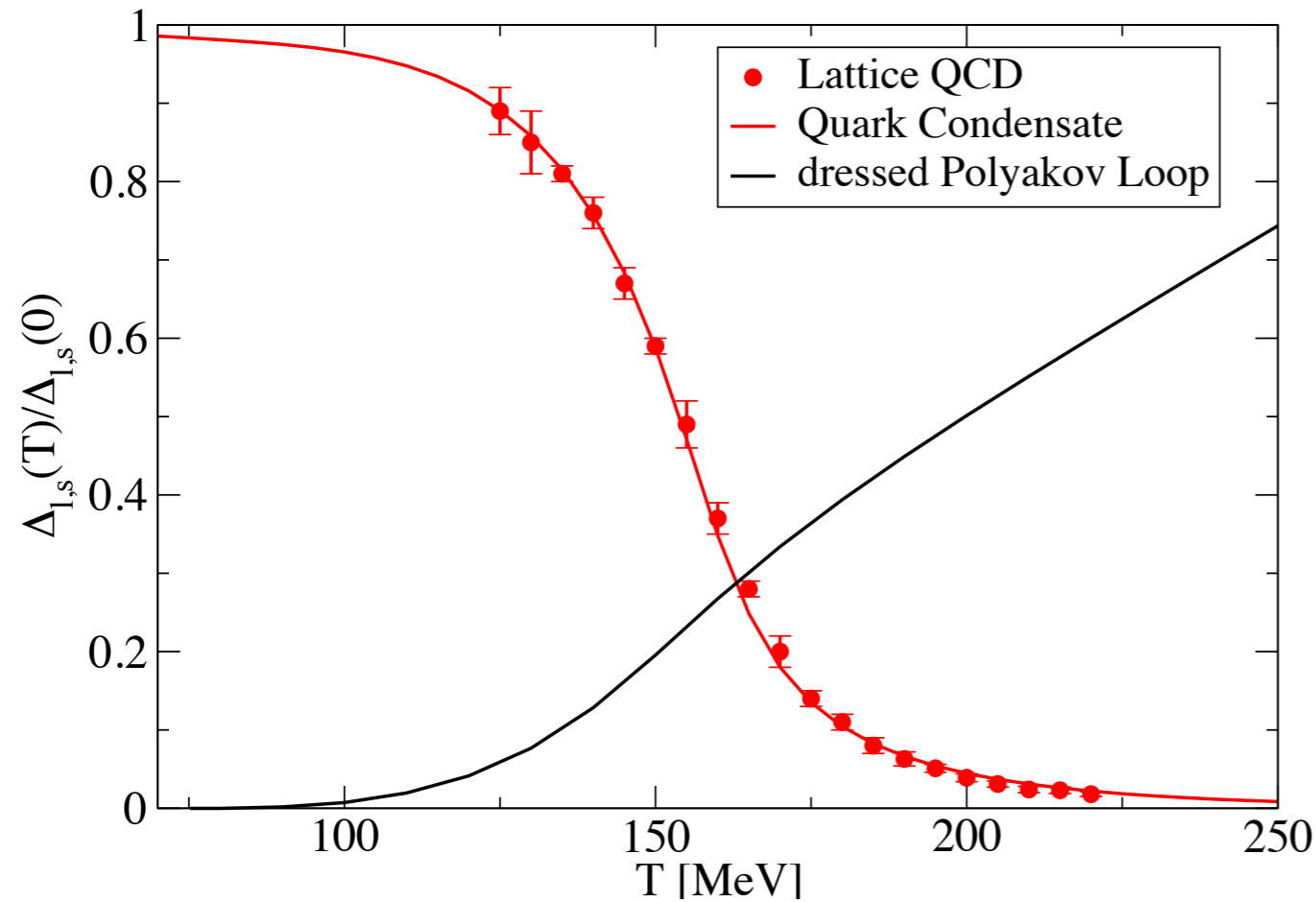
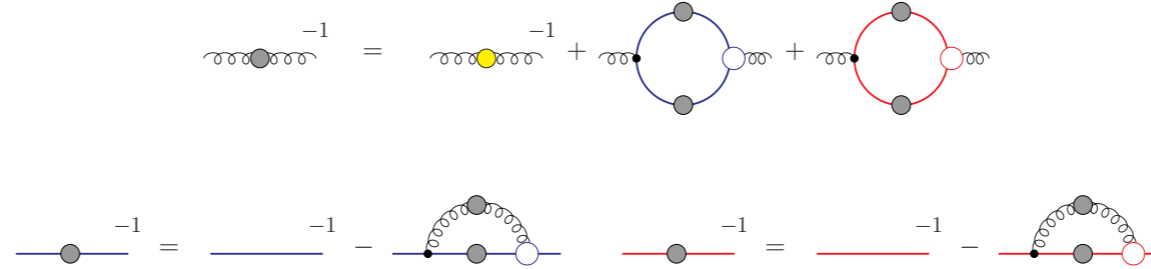
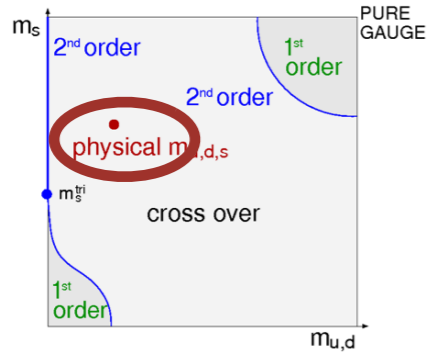
CF, Luecker, Pawlowski, PRD 91 (2015) 1

$N_f=2+1, \mu=0$, physical point



Lattice: Borsanyi *et al.* [Wuppertal-Budapest], JHEP 1009(2010) 073
 DSE: CF, Luecker, PLB 718 (2013) 1036,
 CF, Luecker, Welzbacher, PRD 90 (2014) 034022

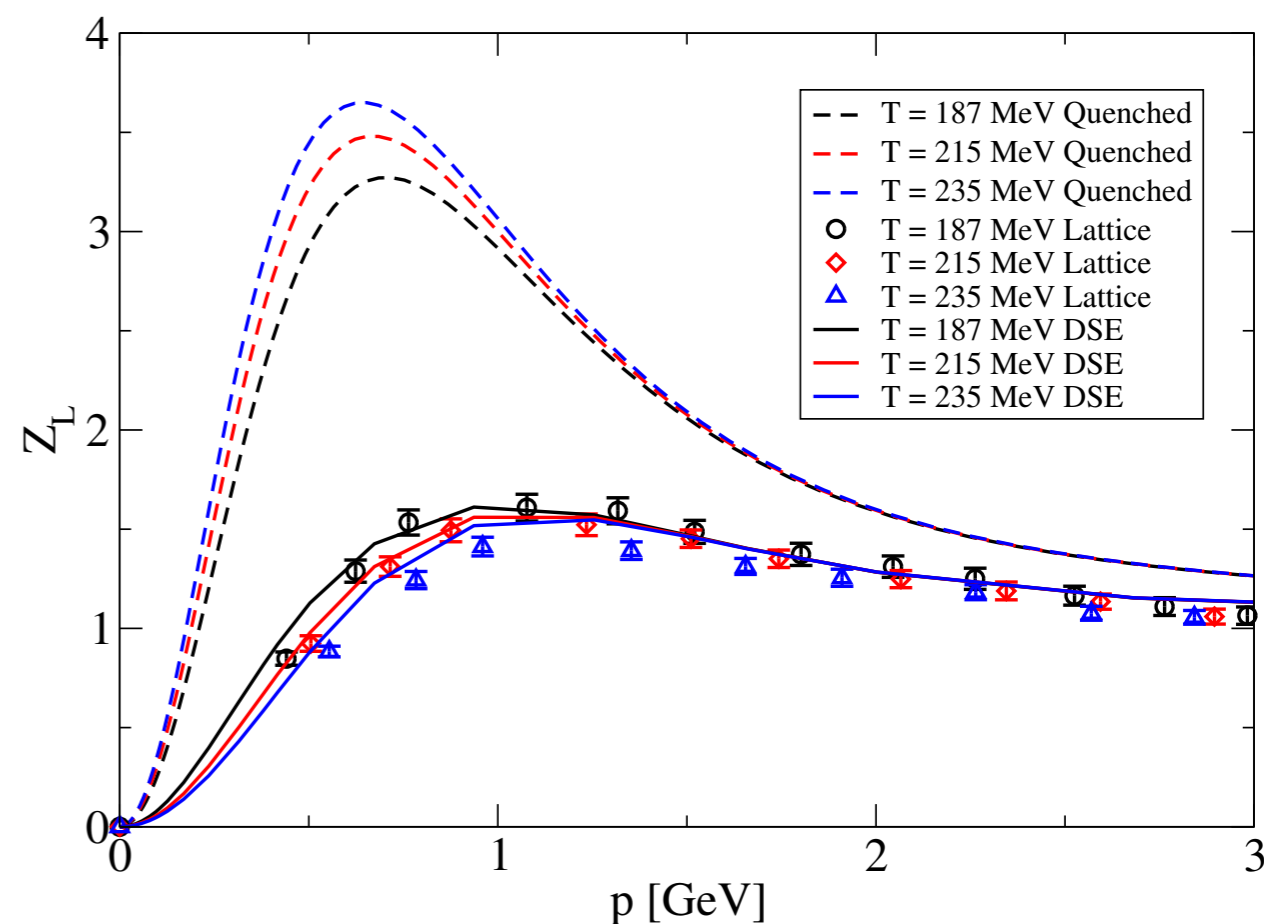
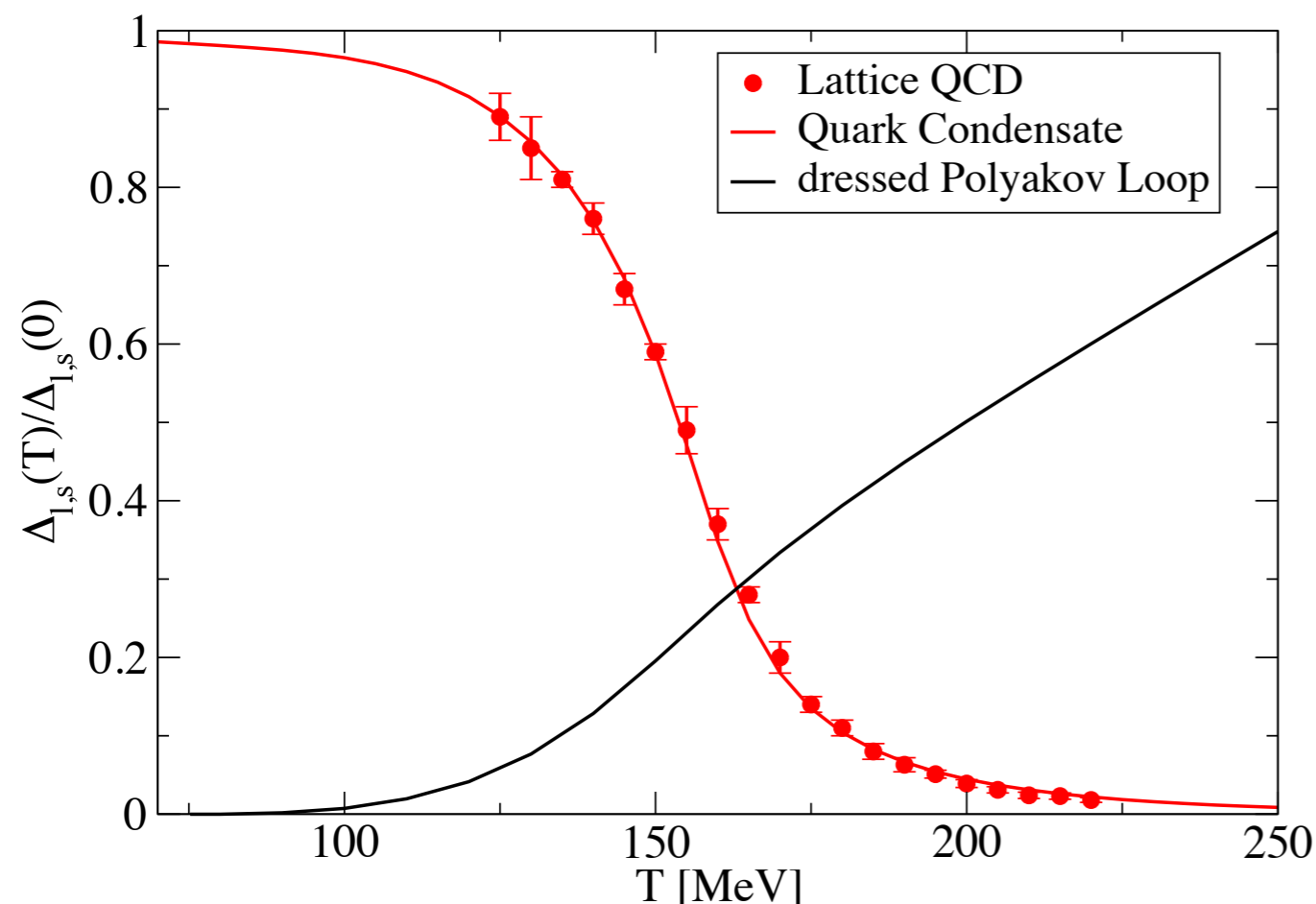
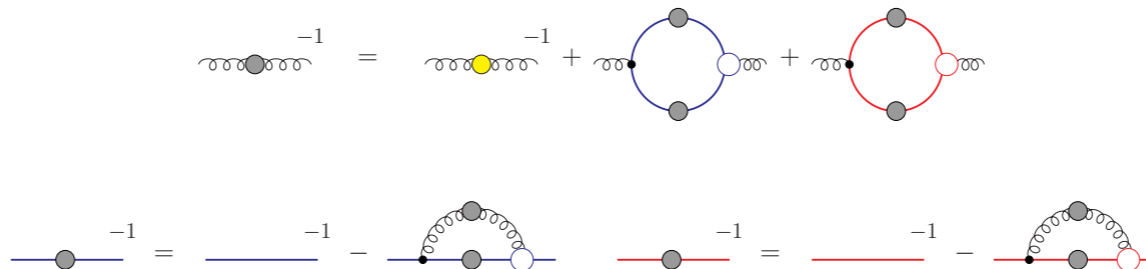
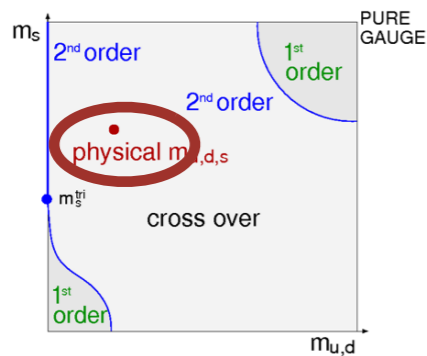
$N_f=2+1, \mu=0$, physical point



Lattice: Borsanyi *et al.* [Wuppertal-Budapest], JHEP 1009(2010) 073

DSE: CF, Luecker, PLB 718 (2013) 1036,
CF, Luecker, Welzbacher, PRD 90 (2014) 034022

$N_f=2+1, \mu=0$, physical point

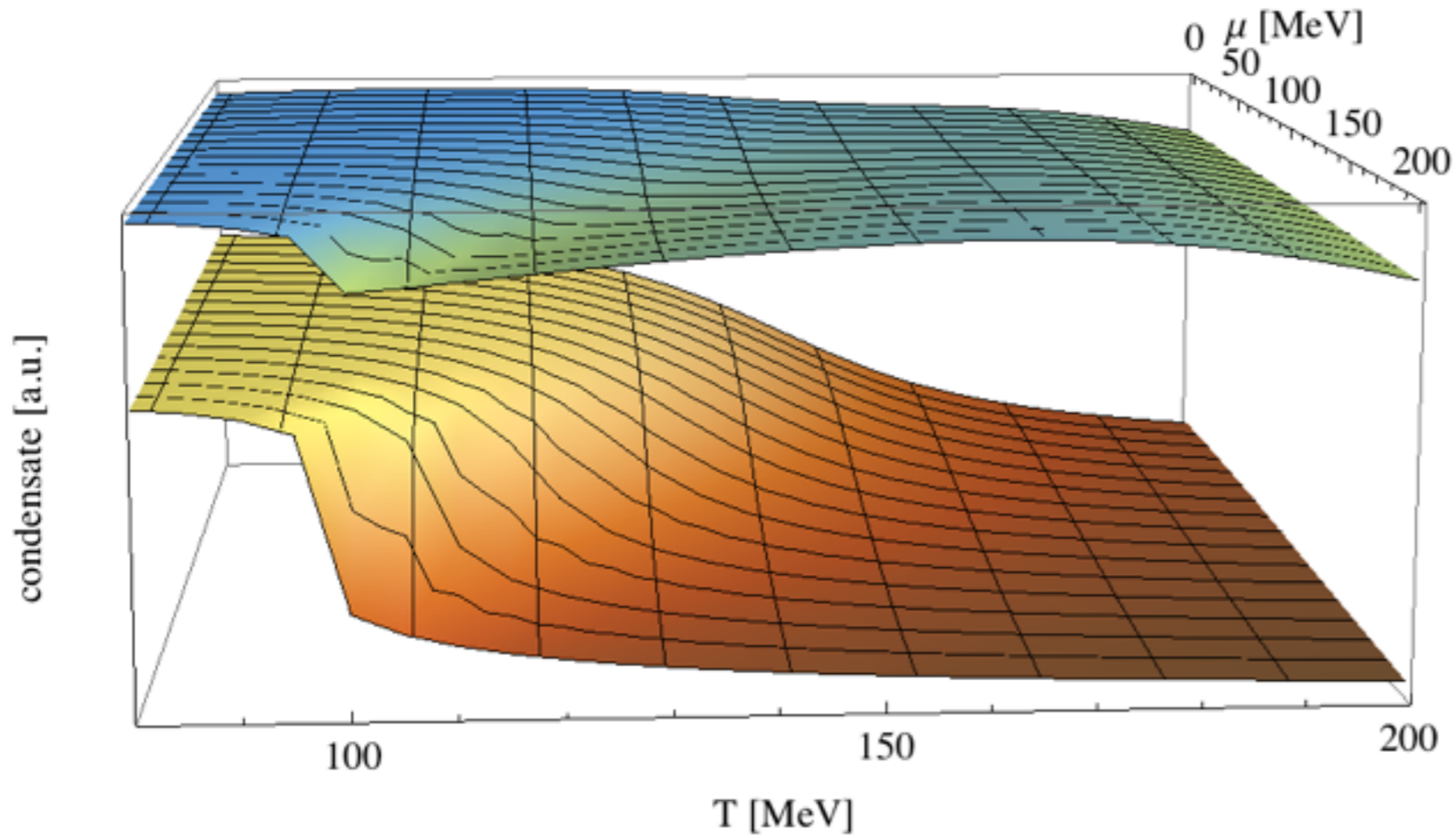


Lattice: Borsanyi *et al.* [Wuppertal-Budapest], JHEP 1009(2010) 073
 DSE: CF, Luecker, PLB 718 (2013) 1036,
 CF, Luecker, Welzbacher, PRD 90 (2014) 034022

Lattice: Aouane, *et al.* PRD D87 (2013), [arXiv:1212.1102]
 DSE: CF, Luecker, PLB 718 (2013) 1036, [arXiv:1206.5191]

● quantitative agreement: **DSE prediction verified by lattice**

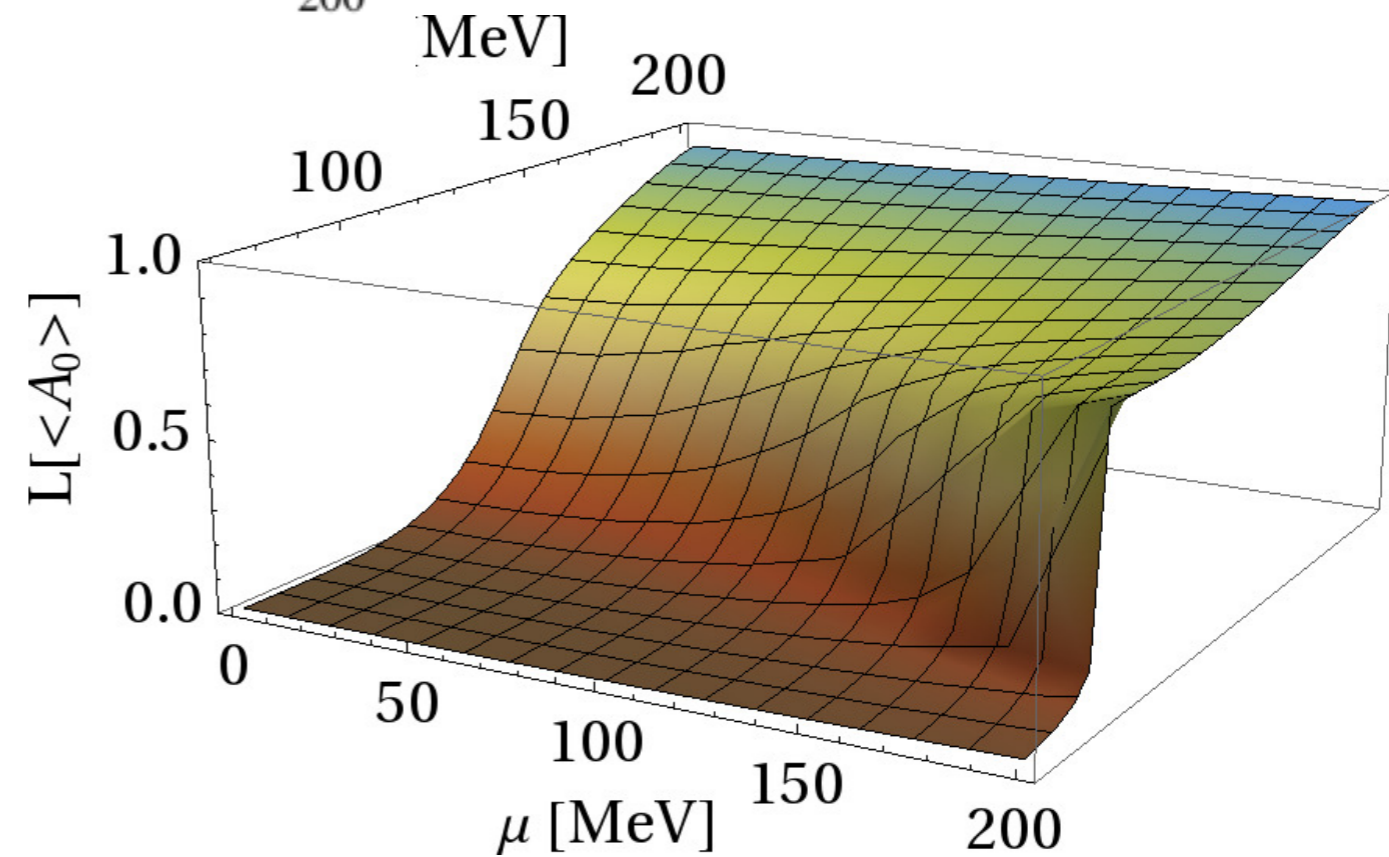
$N_f=2+1$: Condensate and dressed Polyakov Loop



Quark condensate

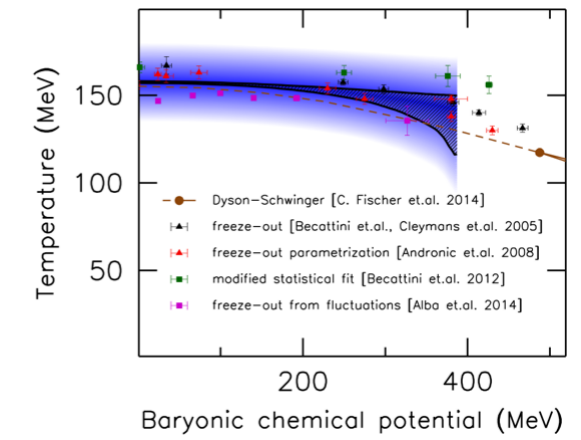
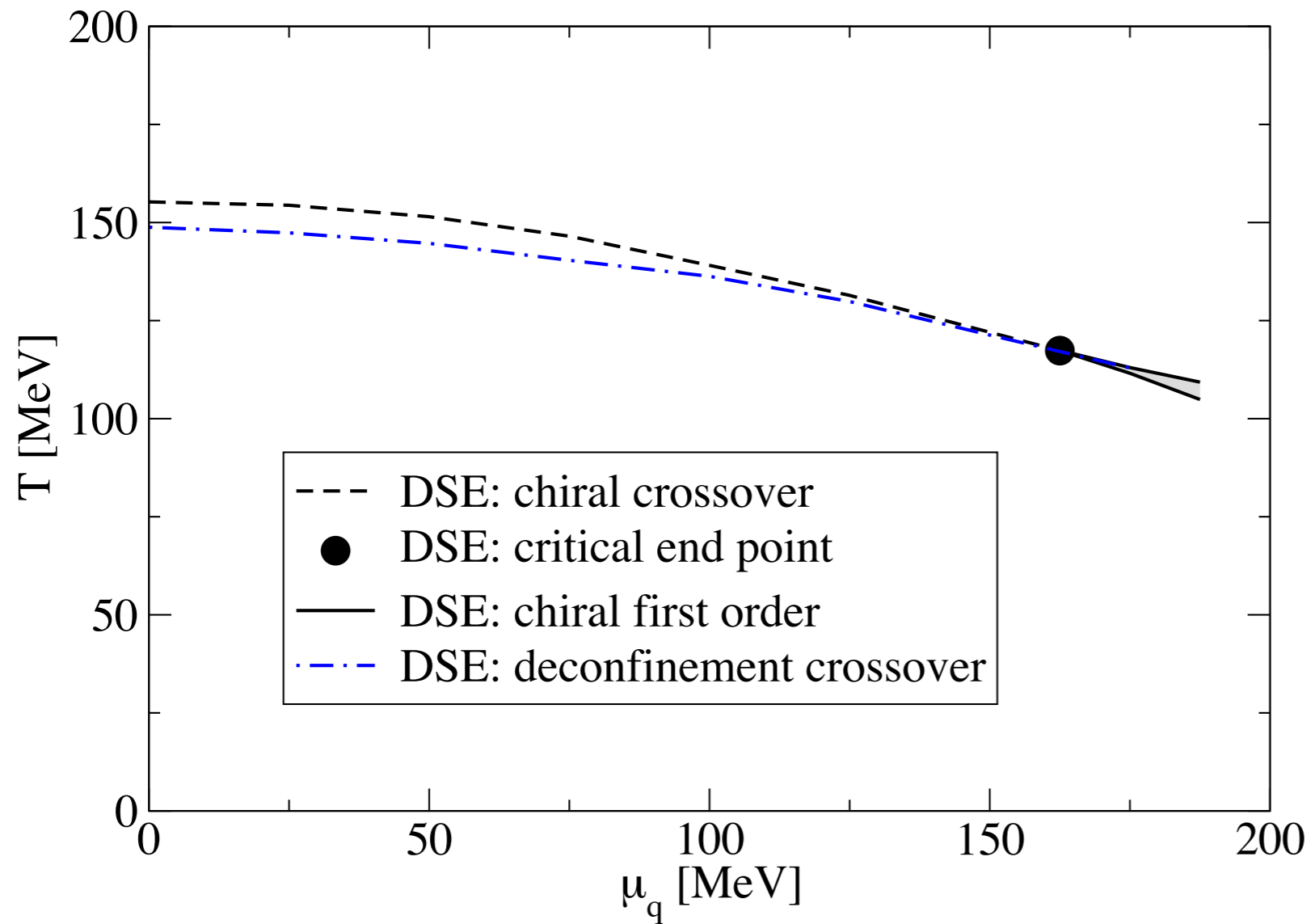
Polyakov-Loop

$$L = \frac{1}{N_c} \text{tr} e^{ig \int A_0}$$

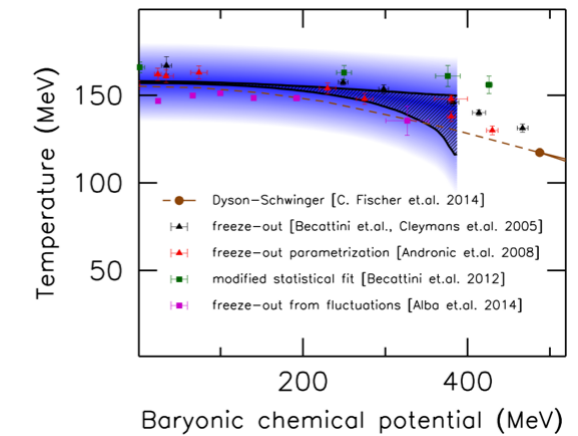
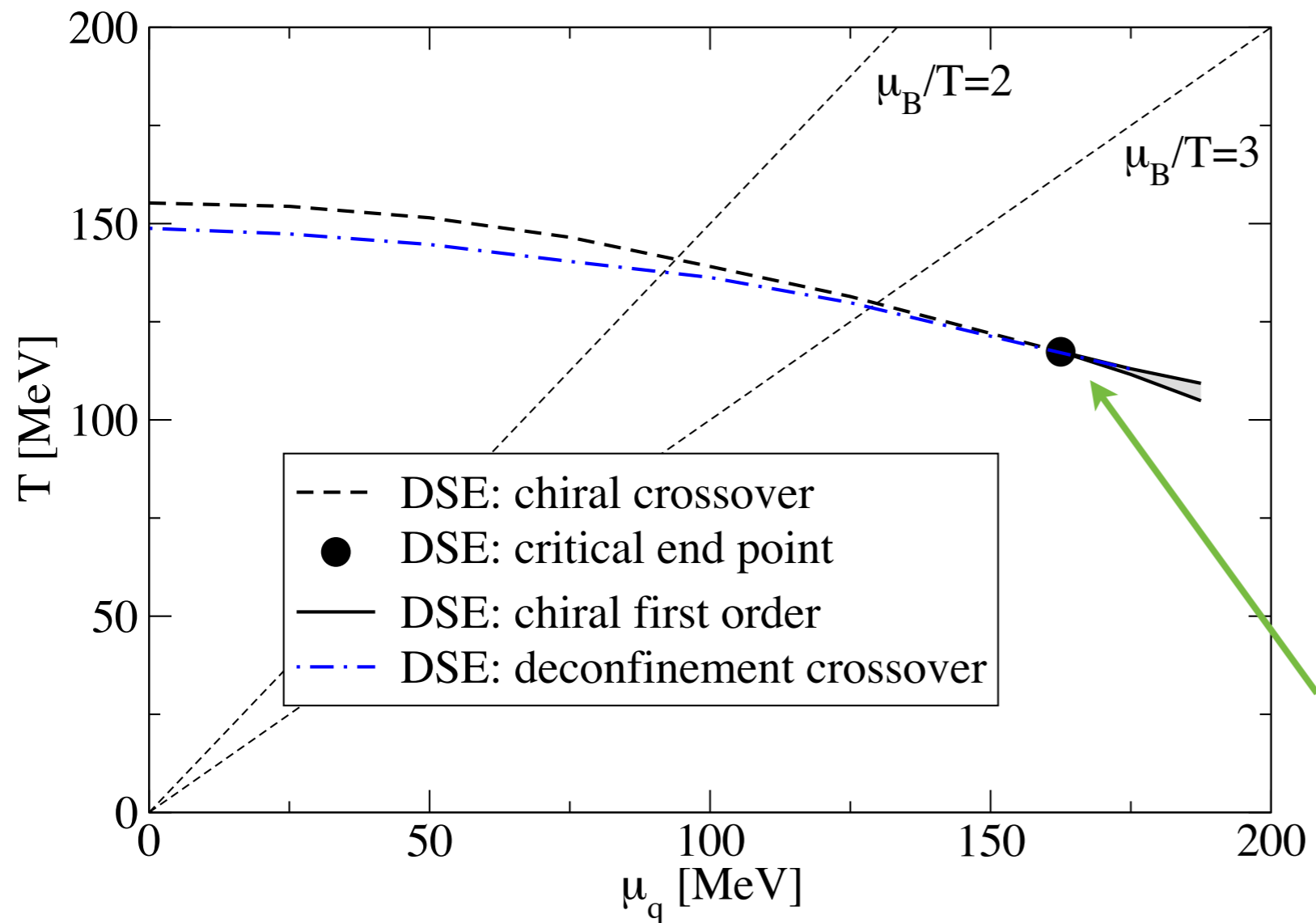


CF, Fister, Luecker, Pawłowski, PLB 732 (2014) 273

$N_f=2+1$: phase diagram



$N_f=2+1$: phase diagram

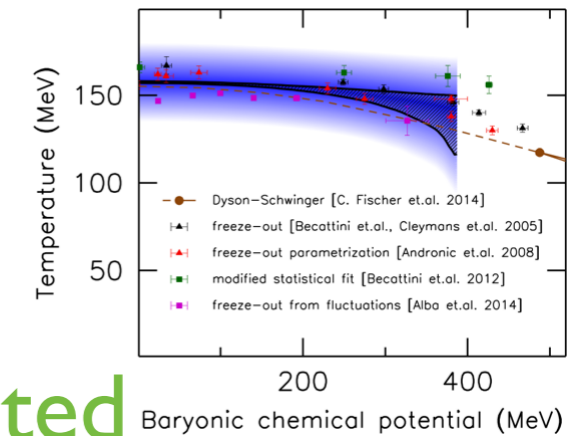
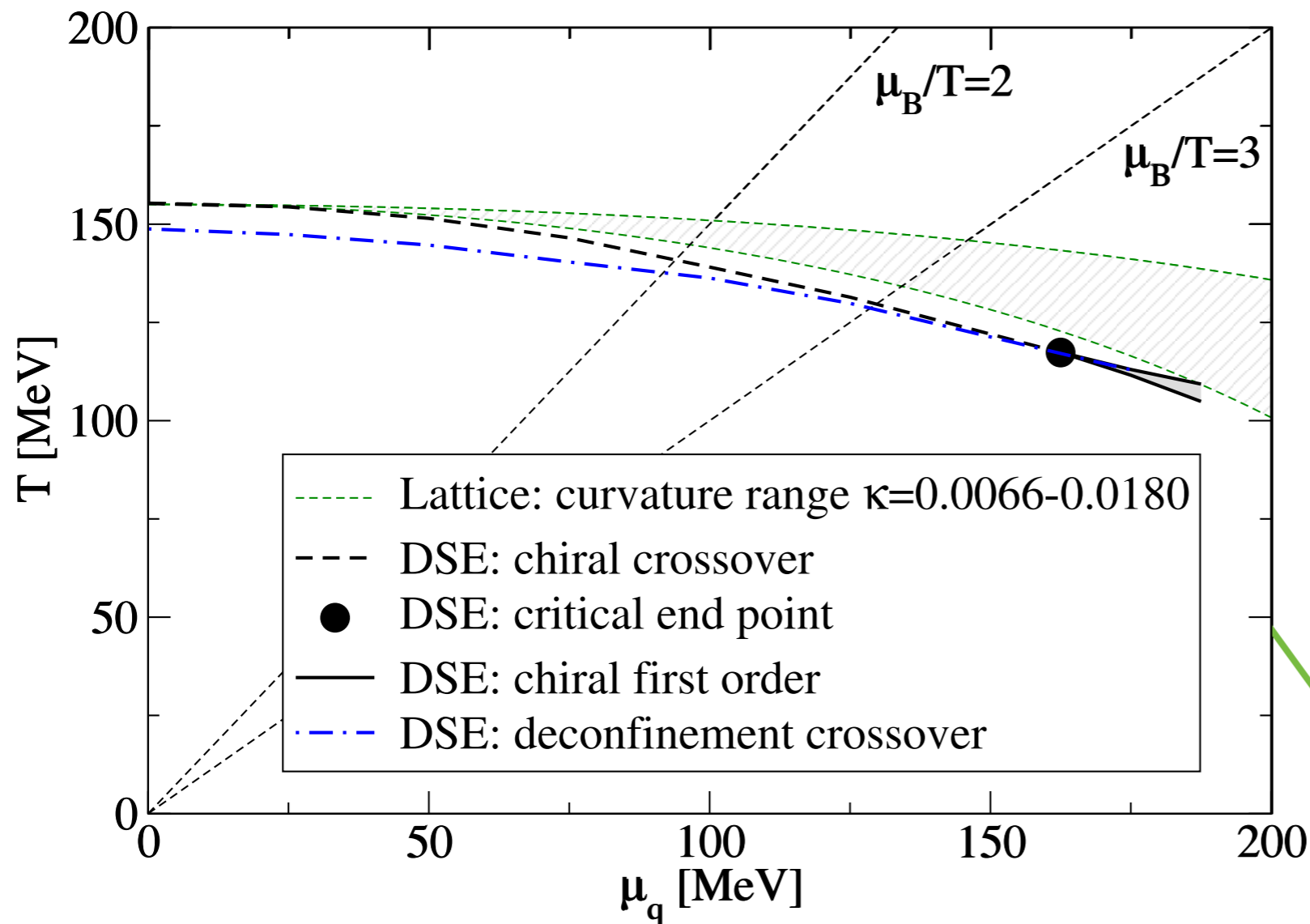


CEP at large μ

CF, Luecker, PLB 718 (2013) 1036,
 CF, Fister, Luecker, Pawłowski, PLB 732 (2014) 273
 CF, Luecker, Welzbacher, PRD 90 (2014) 034022

● combined evidence of FRG and DSE: no CEP at $\mu_B/T < 2$

$N_f=2+1$: phase diagram



Extrapolated curvature from lattice

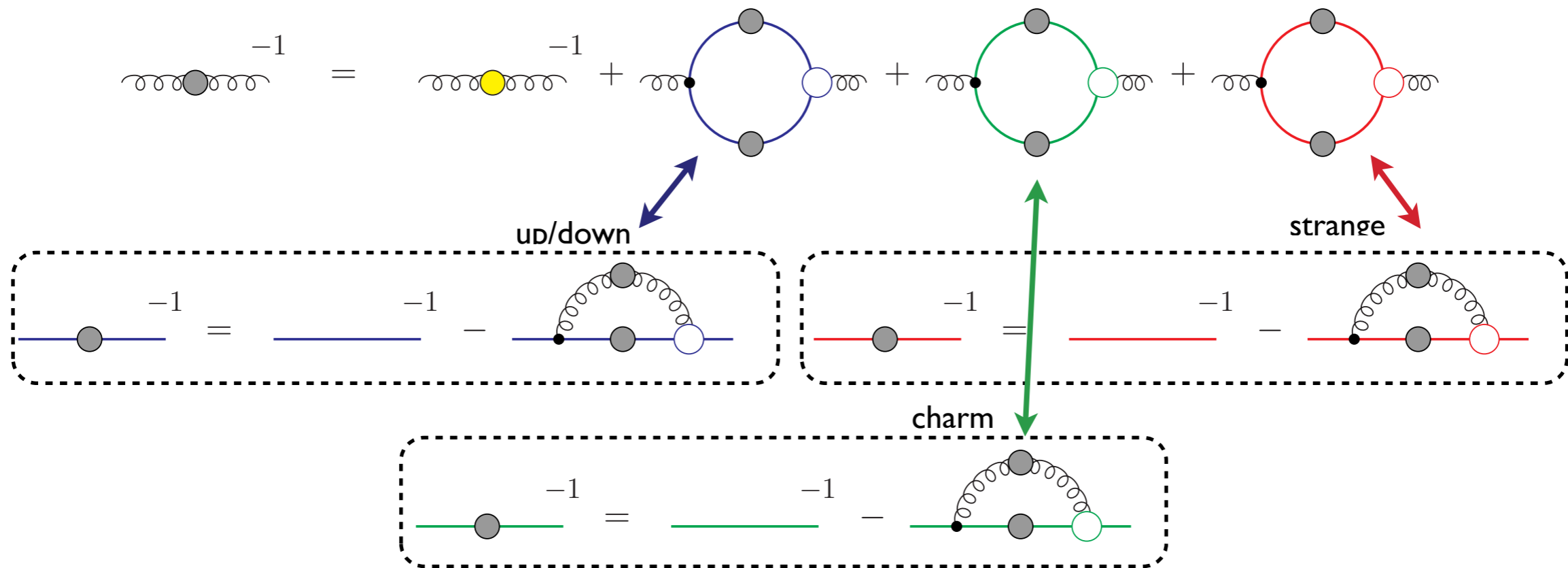
Kaczmarek et al. PRD 83 (2011) 014504,
 Endrodi, Fodor, Katz, Szabo, JHEP 1104 (2011) 001
 Cea, Cosmai, Papa, PRD 89 (2014), PRD 93 (2016)
 Bonati et al., PRD 92 (2015) 054503
 Bellwied et al. PLB 751 (2015) 559

CEP at large μ

CF, Luecker, PLB 718 (2013) 1036,
 CF, Fister, Luecker, Pawłowski, PLB 732 (2014) 273
 CF, Luecker, Welzbacher, PRD 90 (2014) 034022

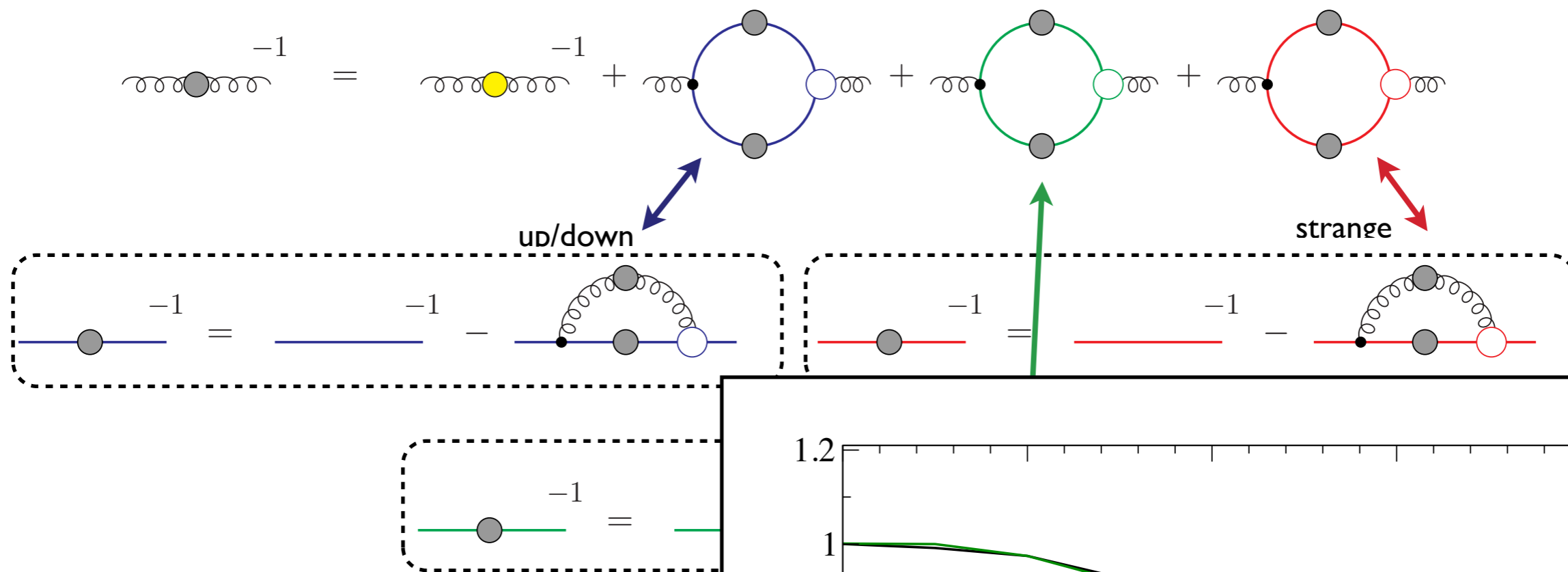
● combined evidence of FRG and DSE: no CEP at $\mu_B/T < 2$

$N_f=2+1+1$: effects of charm

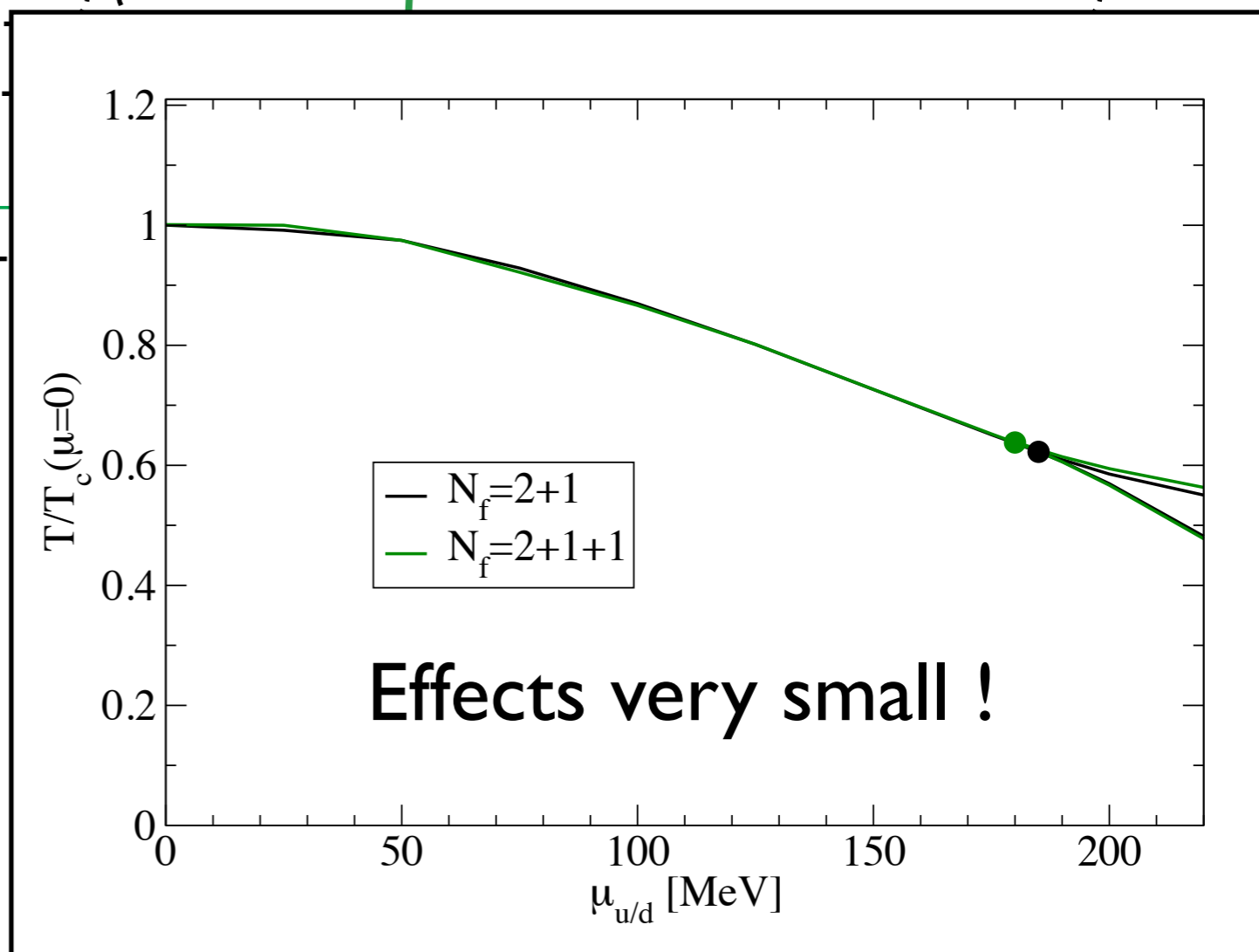


- Physical up/down, strange and **charm quark masses**
- Transition controlled by chiral dynamics
- *no lattice or model results available yet*

$N_f=2+1+1$: effects of charm



- Physical up/down, strange and **charm quark masses**
- Transition controlled by chiral dynamics
- *no lattice or model results available yet*



CF, Luecker, Welzbacher, PRD 90 (2014) 034022

Location of CEP in freeze-out landscape

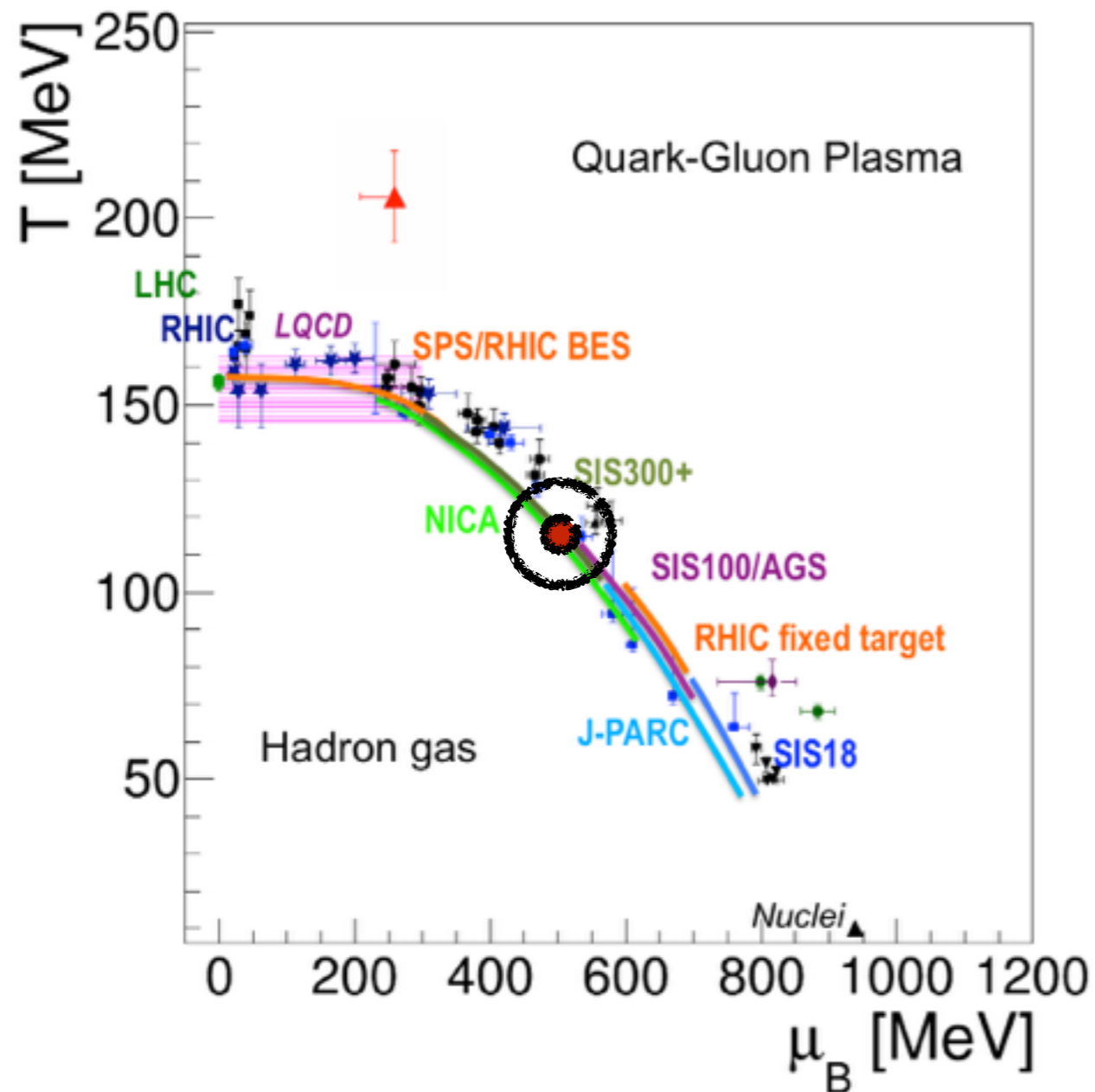


Figure taken from talk of T. Galatyuk, Erice 2016

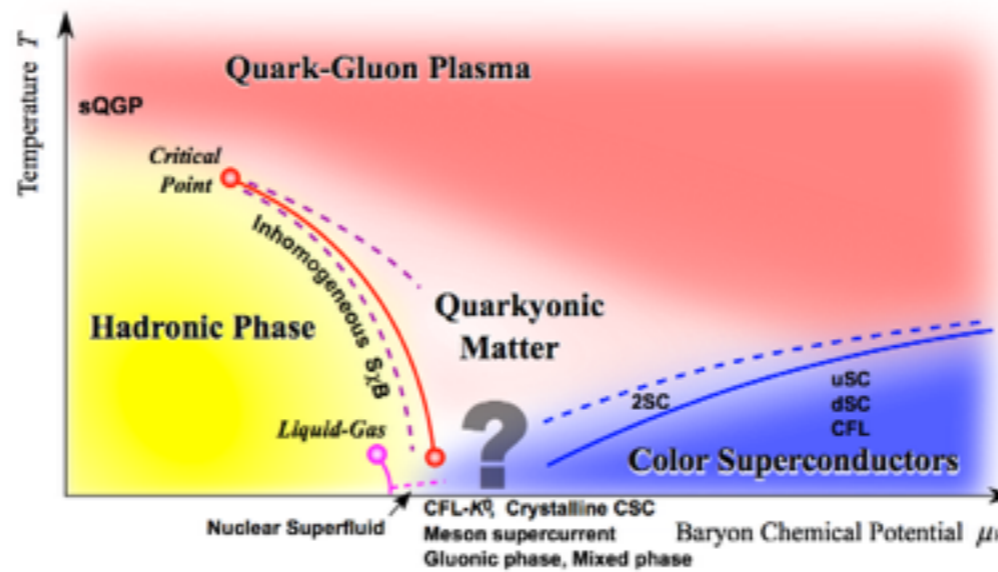
Caveats:

- inhomogeneous phases
- effects of baryons ?
- ...

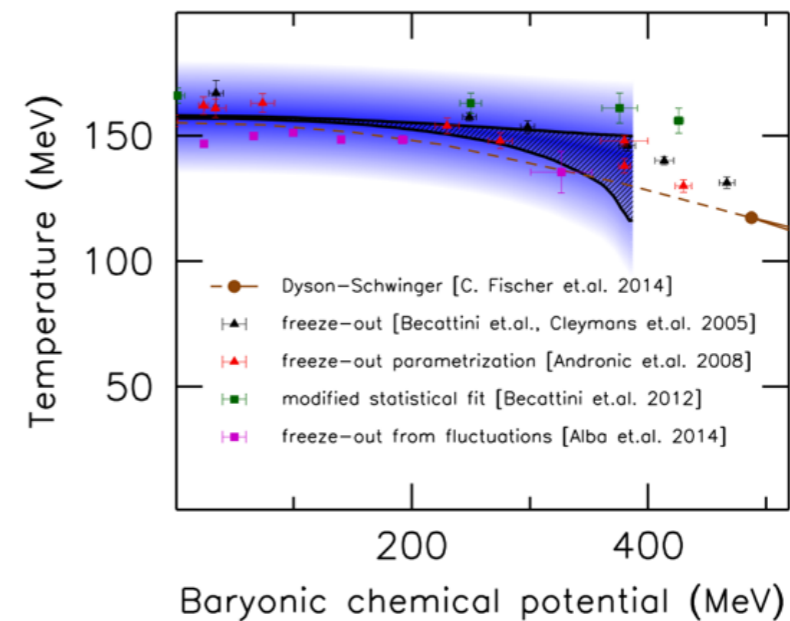
Müller, Buballa and Wambach, PLB 727 (2013) 240

Nc=2: Brauner, Fukushima and Hidaka, PRD 80 (2009) 74035
Strodthoff, Schaefer and Smekal, PRD 85 (2012) 074007

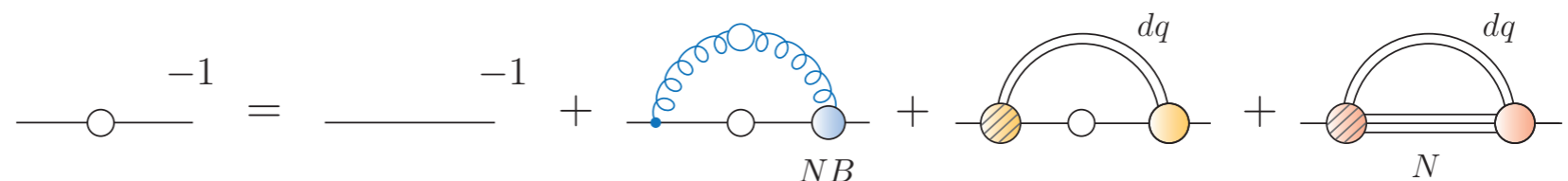
1. Introduction



2. Gluons, quarks and the CEP

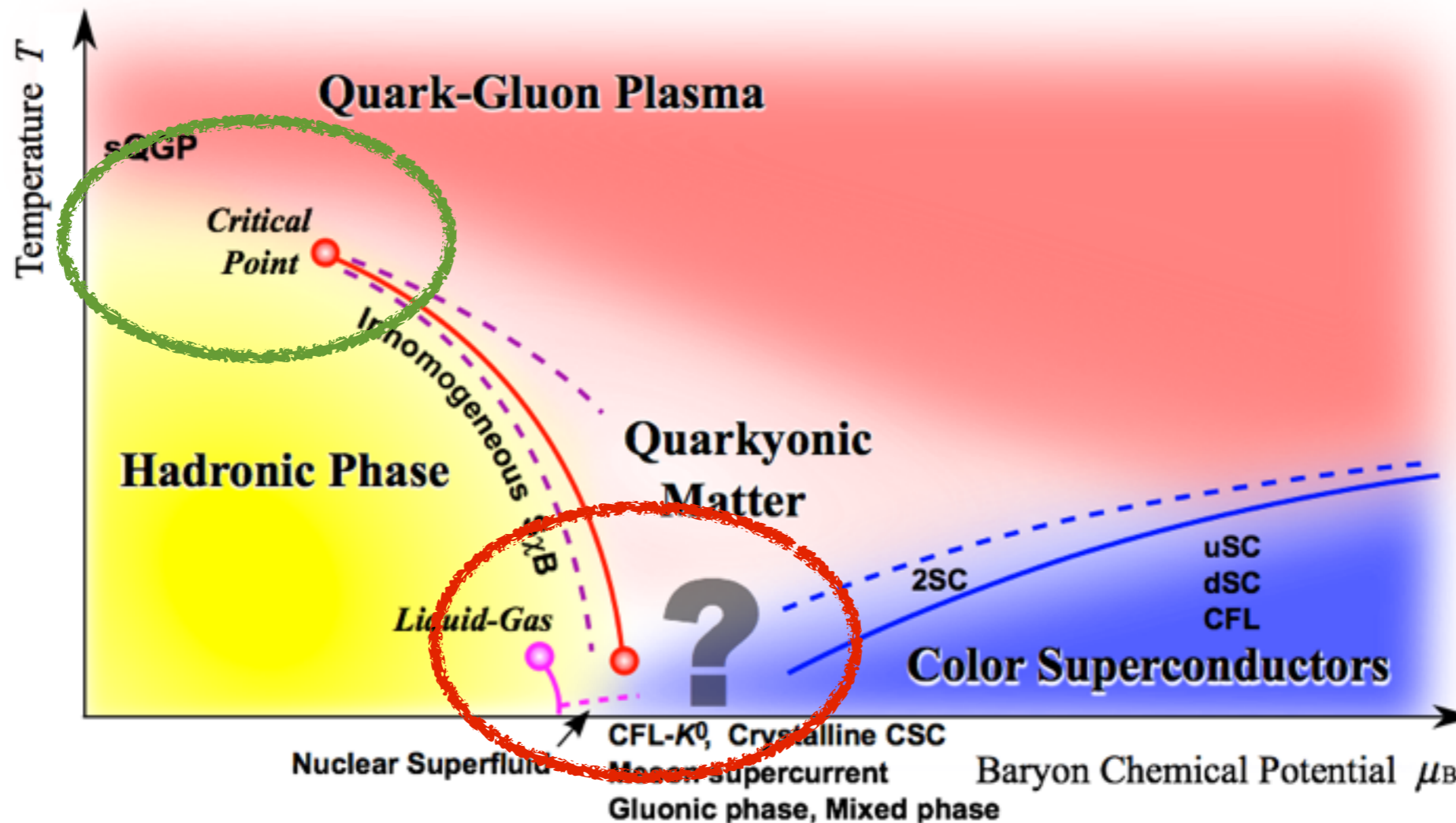


3. Baryon effects on the CEP



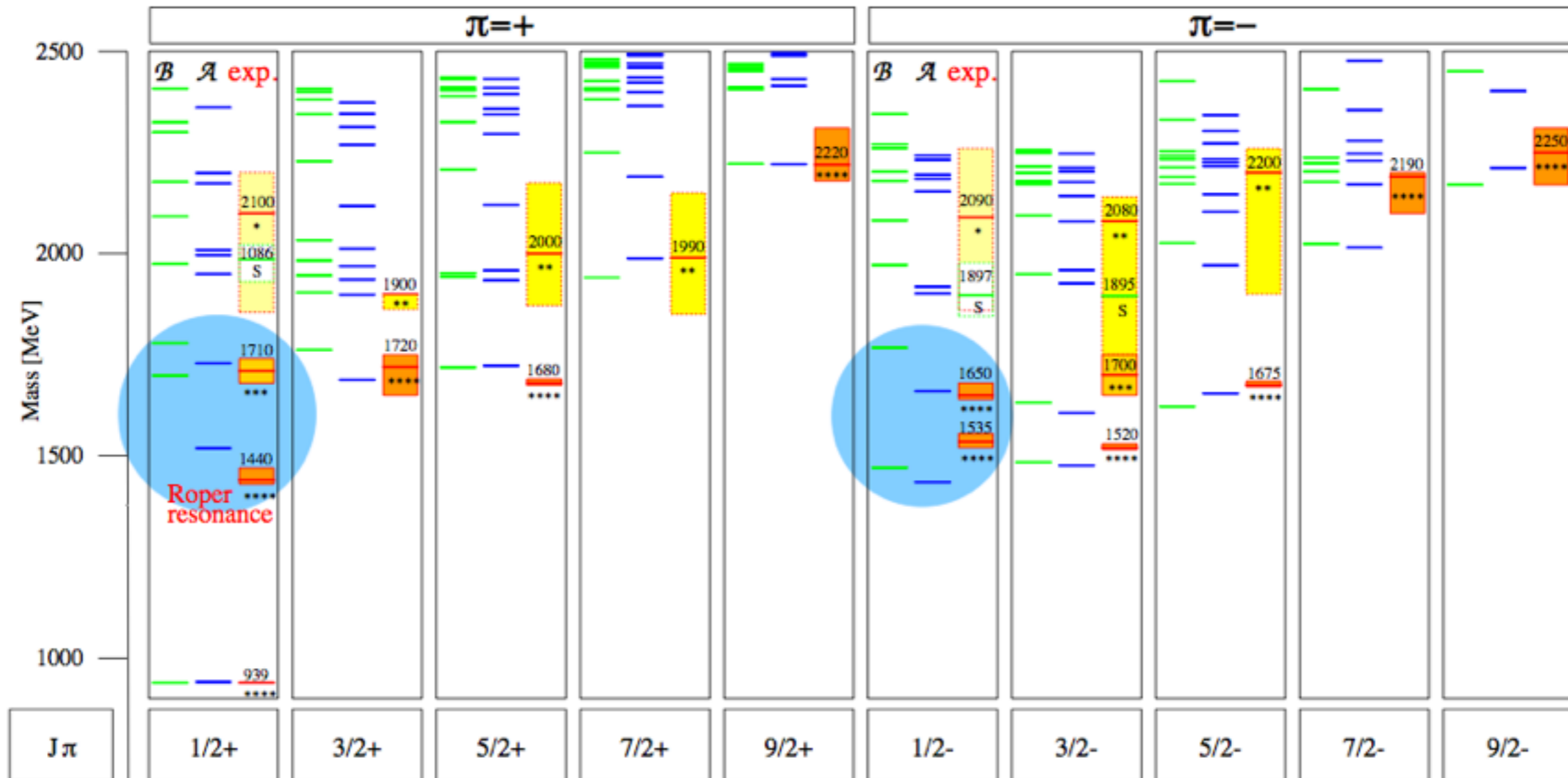
QCD phase transitions I

Fukushima, Hatsuda, Rept. Prog. Phys. 74 (2011) 014001



- Low temperatures, large chemical potential:
baryons are important degrees of freedom
- How do baryons affect the quark condensate ??

Baryons: Quark model



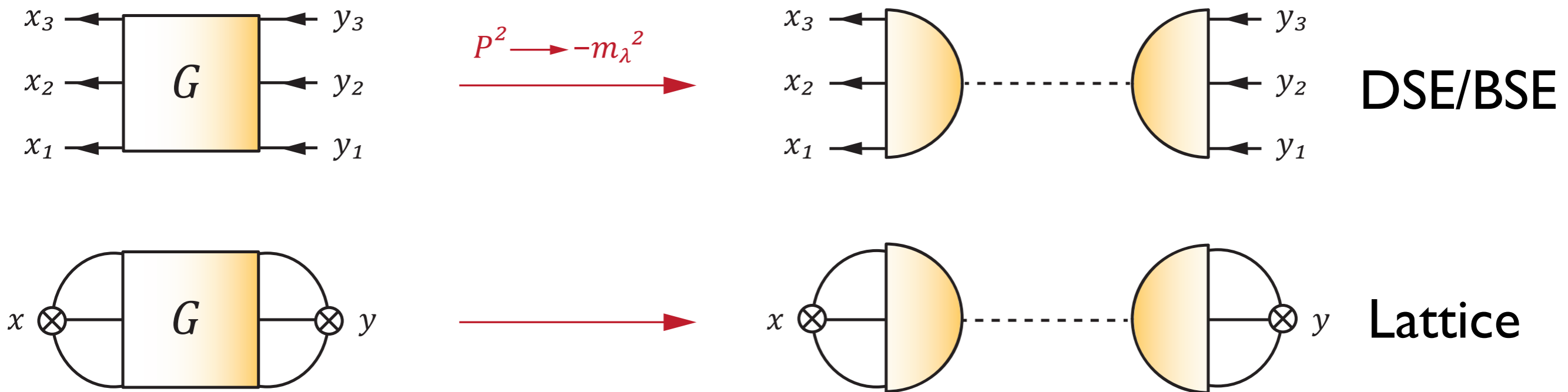
Loring, Metsch, Petry, EPJA 10 (2001) 395

- ‘missing resonances’ - **three-body vs. quark-diquark**

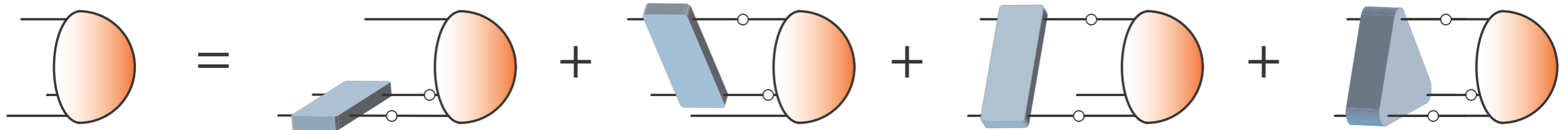
- level ordering: $N_{\frac{1}{2}}^{\pm}$ vs. $\Lambda_{\frac{1}{2}}^{\pm}$

—> Eichmann, A2

Extracting spectra from correlators

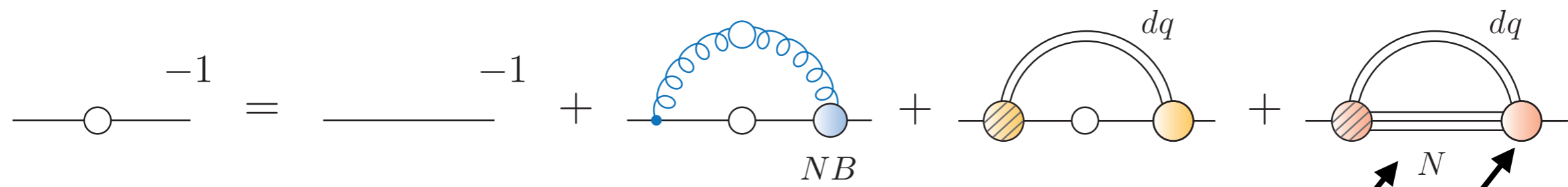
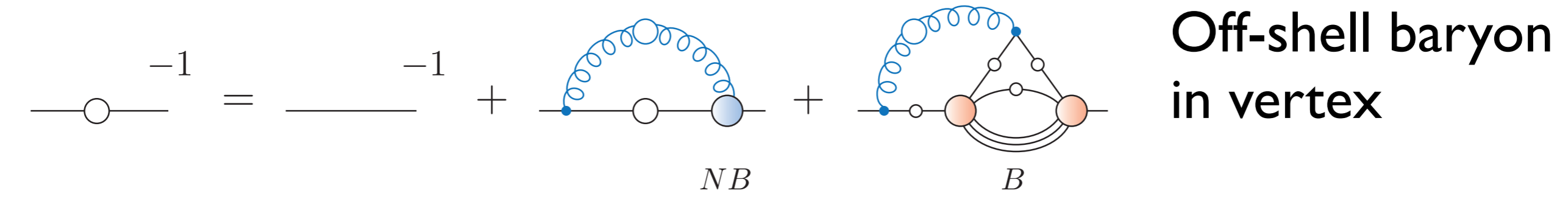


BSE for baryons (derived from equation of motion for G)



- exact equation for baryon ‘wave function’

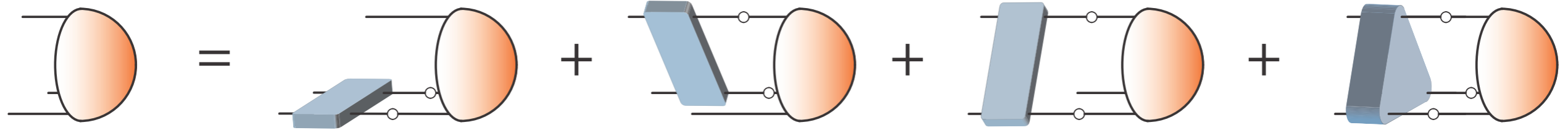
Baryon effects onto quark



- Dependence on T and μ via γ -propagators
-wave functions
- Exploratory calculation: use wave functions from $T=\mu=0$

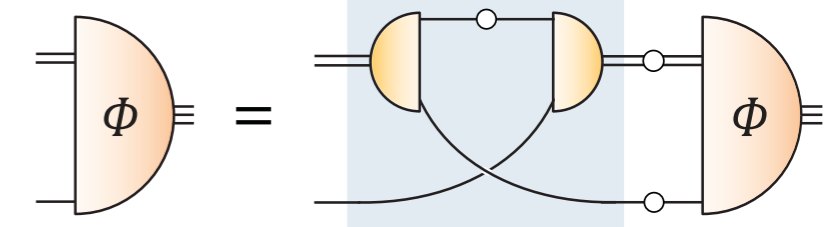
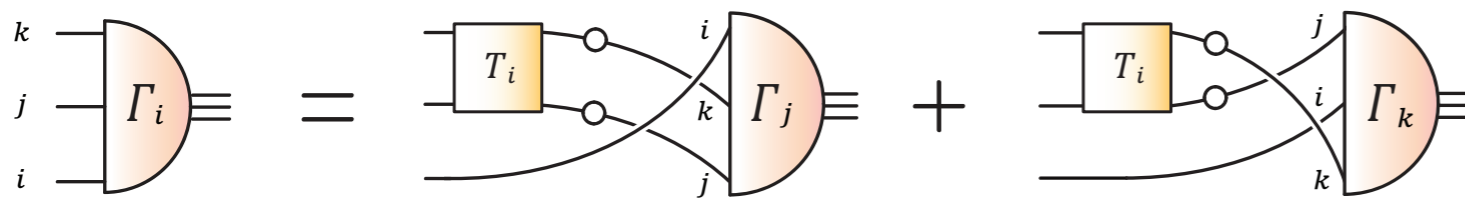
Vacuum: Baryons from BSEs

BSE for baryons (derived from equation of motion for G)



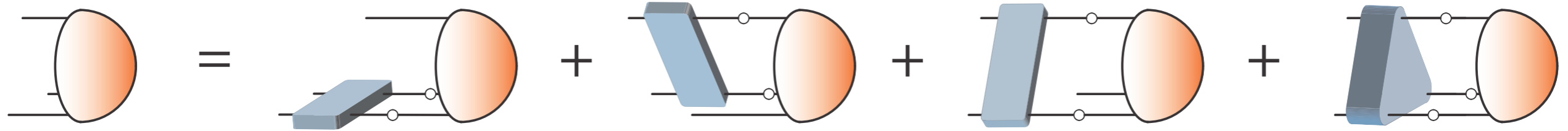
Faddeev equation (no three-body forces)

Diquark-quark

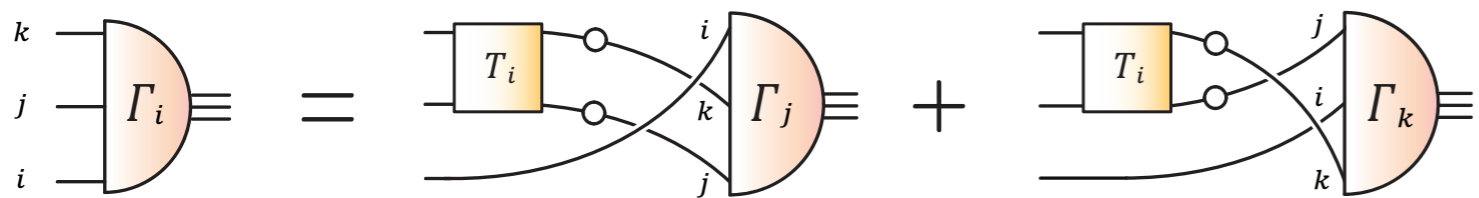


Vacuum: Baryons from BSEs

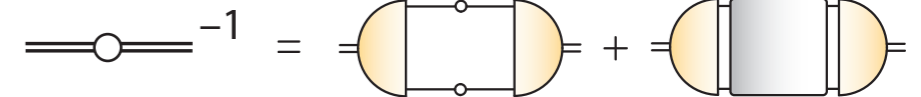
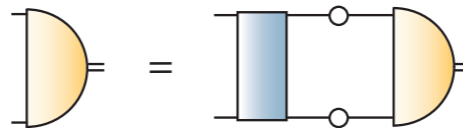
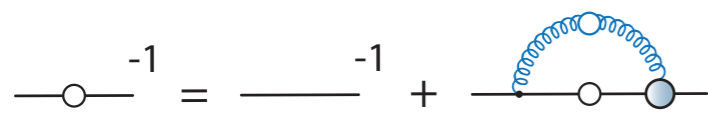
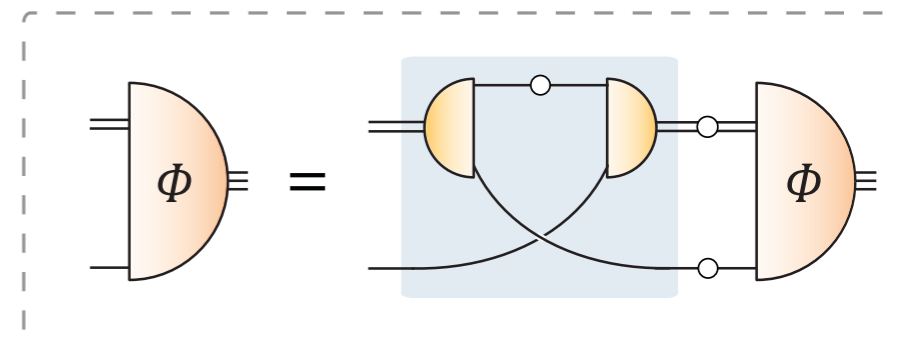
BSE for baryons (derived from equation of motion for G)



Faddeev equation (no three-body forces)

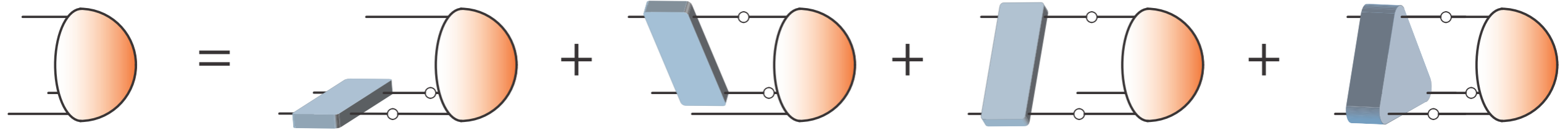


Diquark-quark



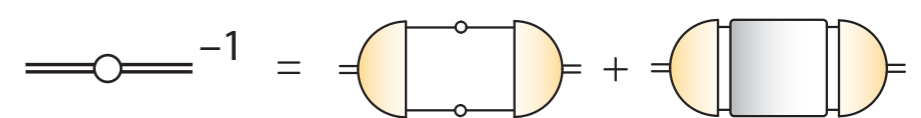
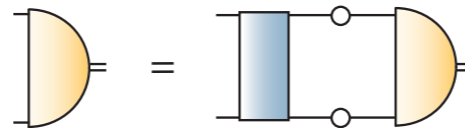
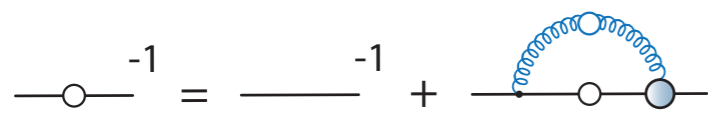
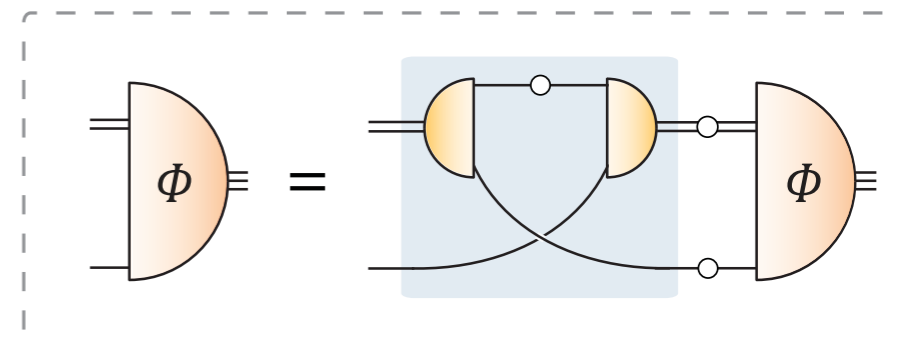
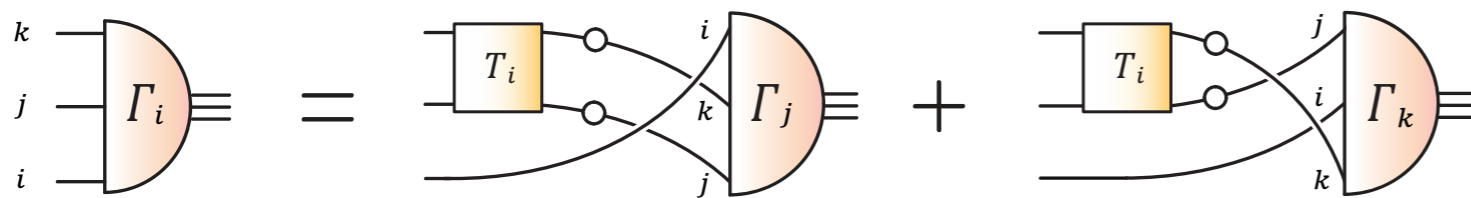
Vacuum: Baryons from BSEs

BSE for baryons (derived from equation of motion for G)



Faddeev equation (no three-body forces)

Diquark-quark



- Input: Non-perturbative quark, quark-gluon interaction (RL)



$$\alpha(k^2) = \pi\eta^7 \left(\frac{k^2}{\Lambda^2} \right) e^{-\eta^2 \left(\frac{k^2}{\Lambda^2} \right)} + \alpha_{UV}(k^2)$$

Vacuum: DSE/Faddeev landscape

	Quark-diquark			Three-quark		
	Contact interaction	QCD-based model	DSE (RL)	RL	bRL	bRL + 3q
N, Δ masses	✓	✓	✓	✓	✓	...
N, Δ em. FFs	✓	✓	✓	✓		
$N \rightarrow \Delta \gamma$	✓	✓	✓	...		
Roper	✓	✓		...		
$N \rightarrow N^* \gamma$	✓	✓		...		
$N^*(1535), \dots$	
$N \rightarrow N^* \gamma$				

Roberts et al

Oettel, Alkofer
Roberts, Bloch
Segovia et al.

Eichmann, Alkofer
Nicmorus, Krassnigg

Eichmann, Alkofer
Sanchis-Alepuz, CF

Sanchis-Alepuz, CF
Williams

Eichmann, N*-Workshop, Trento 2015

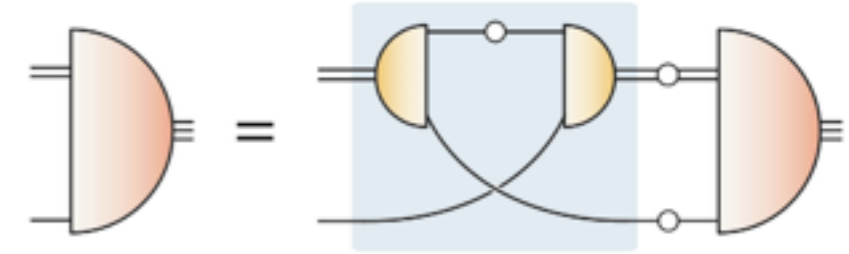
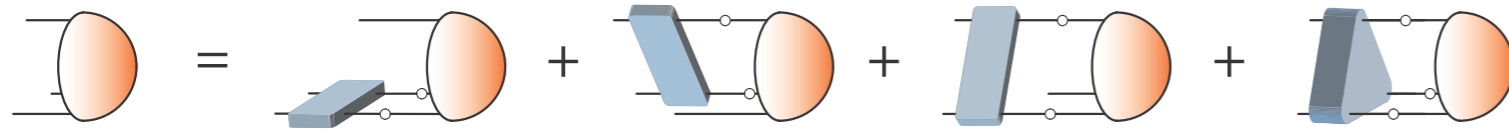
Vacuum: DSE/Faddeev landscape

	Quark-diquark			Three-quark		
	Contact interaction	QCD-based model	DSE (RL)	RL	bRL	bRL + 3q
N, Δ masses	✓	✓	✓	✓	✓	...
N, Δ em. FFs	✓	✓	✓	✓		
$N \rightarrow \Delta \gamma$	✓	✓	✓	...		
Roper	✓	✓		...		
$N \rightarrow N^* \gamma$	✓	✓		...		
$N^*(1535), \dots$	
$N \rightarrow N^* \gamma$		

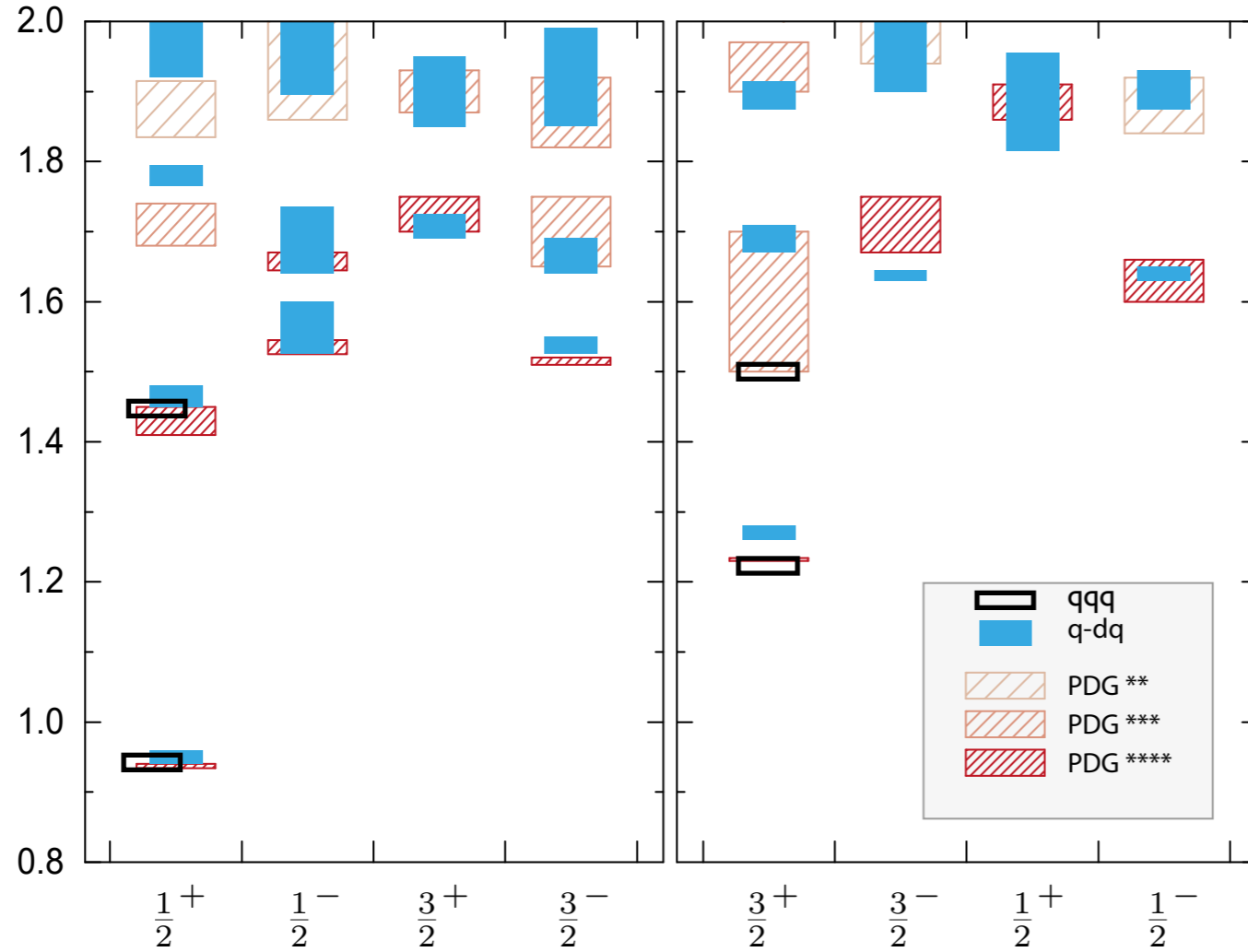
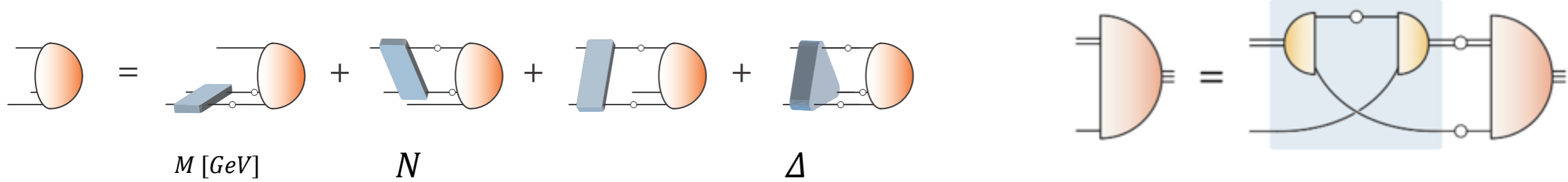
Roberts et al
 Oettel, Alkofer
Roberts, Bloch
Segovia et al.
 Eichmann, Alkofer
Nicmorus, Krassnigg
 Eichmann, Alkofer
Sanchis-Alepuz, CF
 Sanchis-Alepuz, CF
Williams

Eichmann, N*-Workshop, Trento 2015

Vacuum: Light baryon spectrum



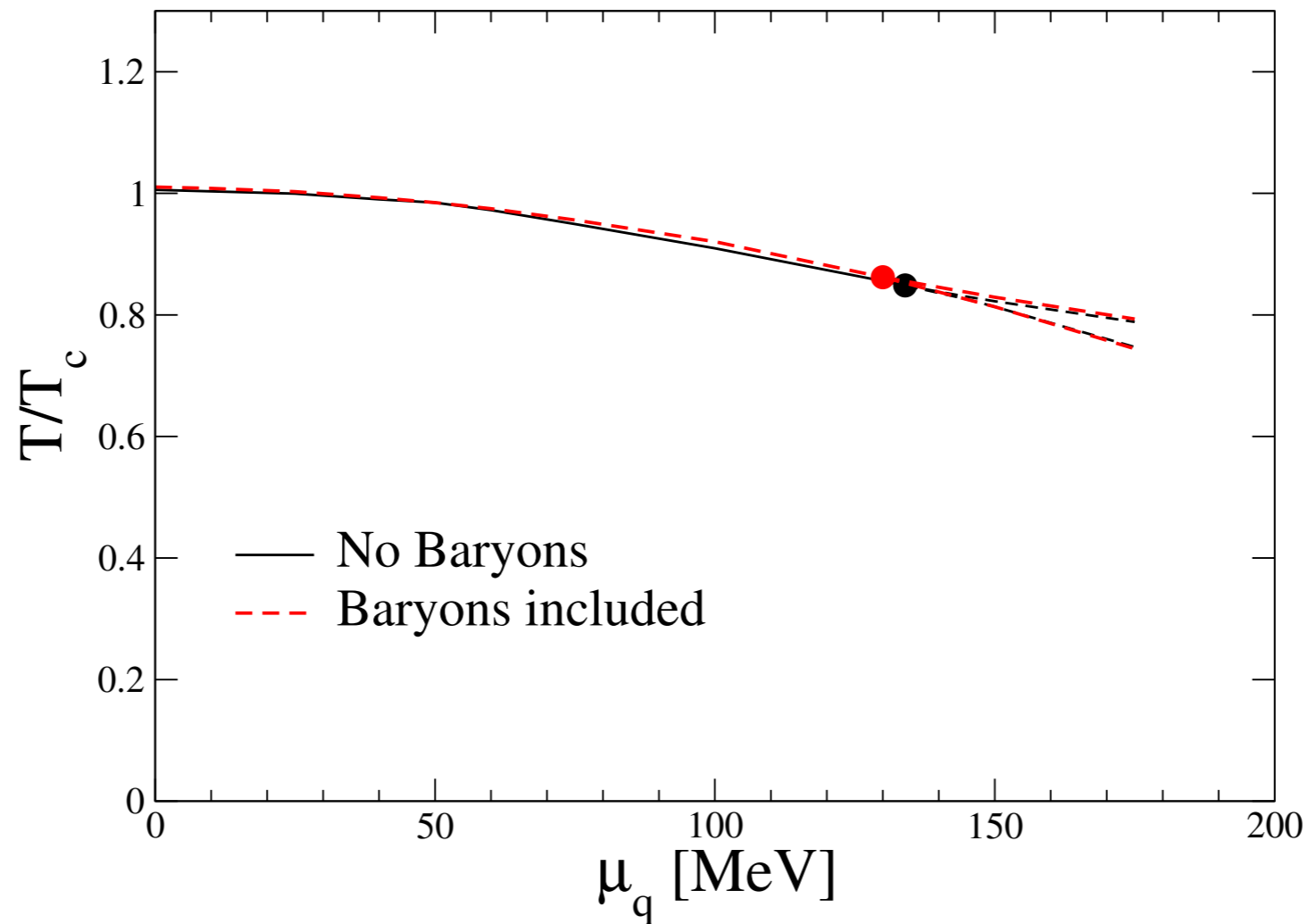
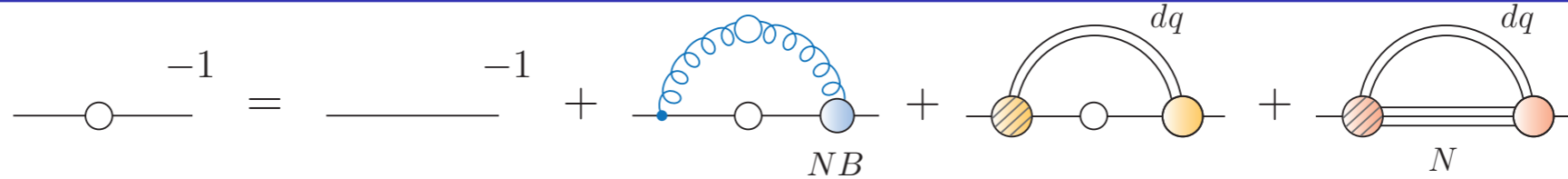
Vacuum: Light baryon spectrum



Eichmann, CF, Sanchis-Alepuz, 1607.05748
 Eichmann, Sanchis-Alepuz, Williams, Alkofer,
 CF, PPNP in press [1606.09602]

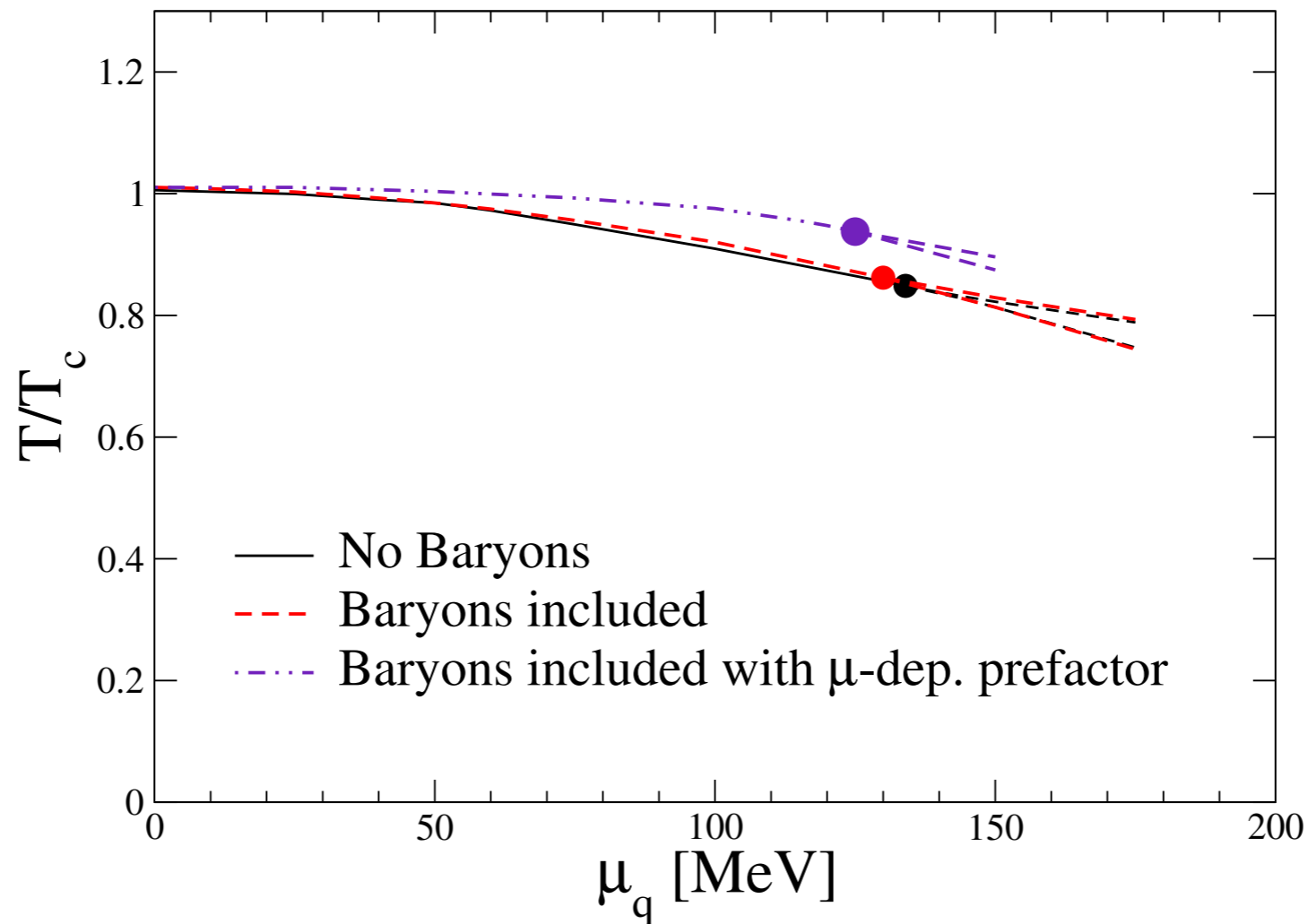
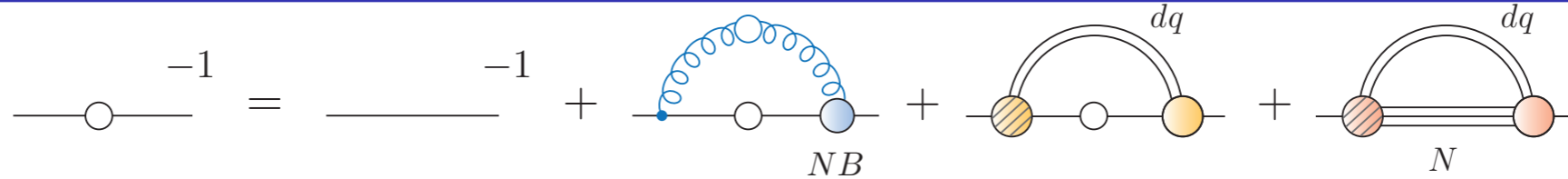
- Three-body and diquark-quark approach agree qualitatively
- Spectrum in one-to-one agreement with experiment
- Correct level ordering (wo. coupled channel effects) !

Baryon effects on the CEP - results ($N_f=2$)



- Zero chemical potential: no effects after rescaling
- CEP: almost no effects

Baryon effects on the CEP - results ($N_f=2$)



- Zero chemical potential: no effects after rescaling
- CEP: almost no effects
- But: strong μ -dependence of baryon wave function may change situation...

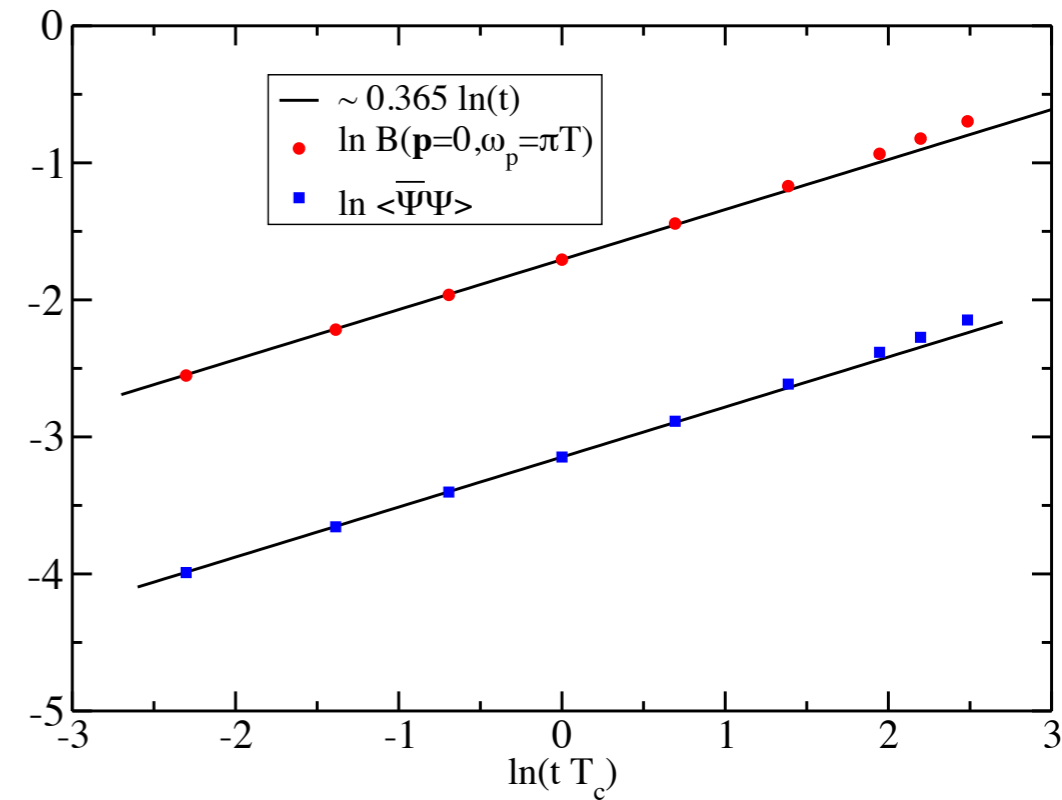
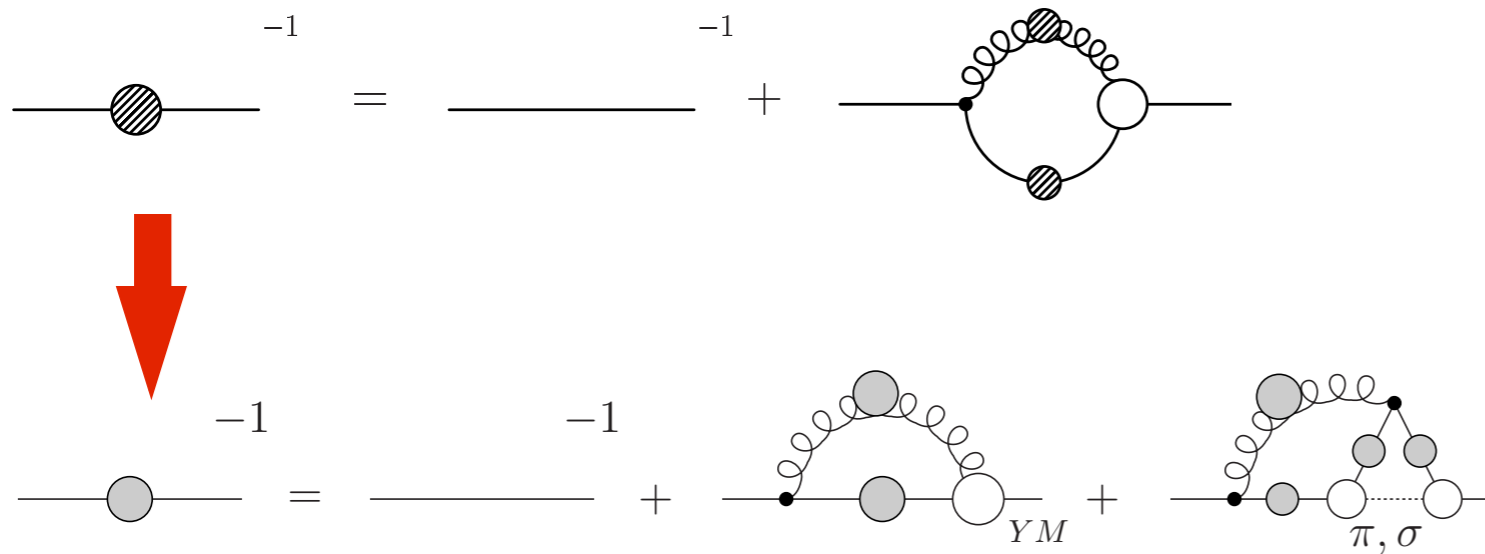
Eichmann, CF, Welzbacher, PRD93 (2016) [1509.02082]

QCD with finite chemical potential:

- back-reaction of quarks onto gluons important
- $N_f=2+1$ and $N_f=2+1+1$: CEP at $\mu_c/T_c > 3$
- charm quark does not influence CEP
- Baryon effects may or may not be significant for CEP...

Work in progress: - mesons and baryons at finite T and μ
- volume effects of CEP from DSEs

Critical scaling from DSEs



- Need to take meson part of vertex explicitly into account

- $T=0$: meson cloud corrections of order of 10-20 %

78 (2008) 074006

CF, Williams,

- $T=T_c$: meson corrections are dominant !

- Critical scaling: $\langle \bar{\Psi} \Psi \rangle(t) \sim B(t) \sim t^\nu/2$

$$f_{\pi,s}^2 \sim t^\nu \quad (t = (T_c - T)/T_c)$$

CF and Mueller, PRD 84 (2011) 054013

Approximation for Quark-Gluon interaction

- T,μ,m-dependent vertex:

Abelian WTI

$$\Gamma_\nu(q, k, p) = \tilde{Z}_3 \left(\delta_{4\nu} \gamma_4 \frac{C(k) + C(p)}{2} + \delta_{j\nu} \gamma_j \frac{A(k) + A(p)}{2} \right) \times$$

$$\times \left(\frac{d_1}{d_2 + q^2} + \frac{q^2}{\Lambda^2 + q^2} \left(\frac{\beta_0 \alpha(\mu) \ln[q^2 / \Lambda^2 + 1]}{4\pi} \right)^{2\delta} \right)$$

perturbation theory

Infrared ansatz:

- d2 fixed to match gluon input
- d1 fixed via quark condensate (see later)
- correct UV (quant.) and IR-behavior (qual.)

CF, Pawłowski, PRD 80 (2009) 025023
Mitter, Pawłowski and Strodthoff, PRD 91 (2015) 054035
Williams, Fischer, Heupel, PRD 93 (2016) 034026

DSE/Faddeev landscape ($T=\mu=0$)

	Quark-diquark			Three-quark		
	Contact interaction	QCD-based model	DSE (RL)	RL	bRL	bRL + 3q
N, Δ masses	✓	✓	✓	✓	✓	...
N, Δ em. FFs	✓	✓	✓	✓		
$N \rightarrow \Delta \gamma$	✓	✓	✓	...		
Roper	✓	✓		...		
$N \rightarrow N^* \gamma$	✓	✓		...		
$N^*(1535), \dots$	
$N \rightarrow N^* \gamma$				

Roberts et al

Oettel, Alkofer
Roberts, Bloch
Segovia et al.

Eichmann, Alkofer
Nicmorus, Krassnigg

Eichmann, Alkofer
Sanchis-Alepuz, CF

Sanchis-Alepuz, CF
Williams

Eichmann, N*-Workshop, Trento 2015

DSE/Faddeev landscape ($T=\mu=0$)

	Contact interaction	Quark-diquark QCD-based model	DSE (RL)	Three-quark RL	bRL	bRL + 3q
N, Δ N, Δ $N \rightarrow \dots$ Roper $N \rightarrow \dots$					✓	...
$N^*(1535), \dots$ $N \rightarrow N^* \gamma$
	Roberts et al	Oettel, Alkofer Roberts, Bloch Segovia et al.	Eichmann, Alkofer Nicmorus, Krassnigg	Eichmann, Alkofer Sanchis-Alepuz, CF	Sanchis-Alepuz, CF Williams	

Eichmann, N*-Workshop, Trento 2015

DSE/Faddeev landscape ($T=\mu=0$)

	Quark-diquark			Three-quark		
	Contact interaction	QCD-based model	DSE (RL)	RL	bRL	bRL + 3q
N, Δ masses	✓	✓	✓	✓	✓	...
N, Δ em. FFs	✓	✓	✓	✓		
$N \rightarrow \Delta \gamma$	✓	✓	✓	...		
Roper	✓	✓		...		
$N \rightarrow N^* \gamma$	✓	✓		...		
$N^*(1535), \dots$	
$N \rightarrow N^* \gamma$				

Roberts et al

Oettel, Alkofer
Roberts, Bloch
Segovia et al.

Eichmann, Alkofer
Nicmorus, Krassnigg

Eichmann, Alkofer
Sanchis-Alepuz, CF

Sanchis-Alepuz, CF
Williams

Eichmann, N*-Workshop, Trento 2015

DSE/Faddeev landscape ($T=\mu=0$)

	Quark-diquark			Three-quark		
	Contact interaction	QCD-based model	DSE (RL)	RL	bRL	bRL + 3q
N, Δ masses	✓	✓	✓	✓	✓	...
N, Δ em. FFs	✓	✓	✓	✓		
$N \rightarrow \Delta \gamma$	✓	✓	✓	...		
Roper	✓	✓		...		
$N \rightarrow N^* \gamma$	✓	✓		...		
$N^*(1535), \dots$	
$N \rightarrow N^* \gamma$				
	Roberts et al	Oettel, Alkofer Roberts, Bloch Segovia et al.	Eichmann, Alkofer Nicmorus, Krassnigg	Eichmann, Alkofer Sanchis-Alepuz, CF	Sanchis-Alepuz, CF Williams	

Eichmann, N*-Workshop, Trento 2015